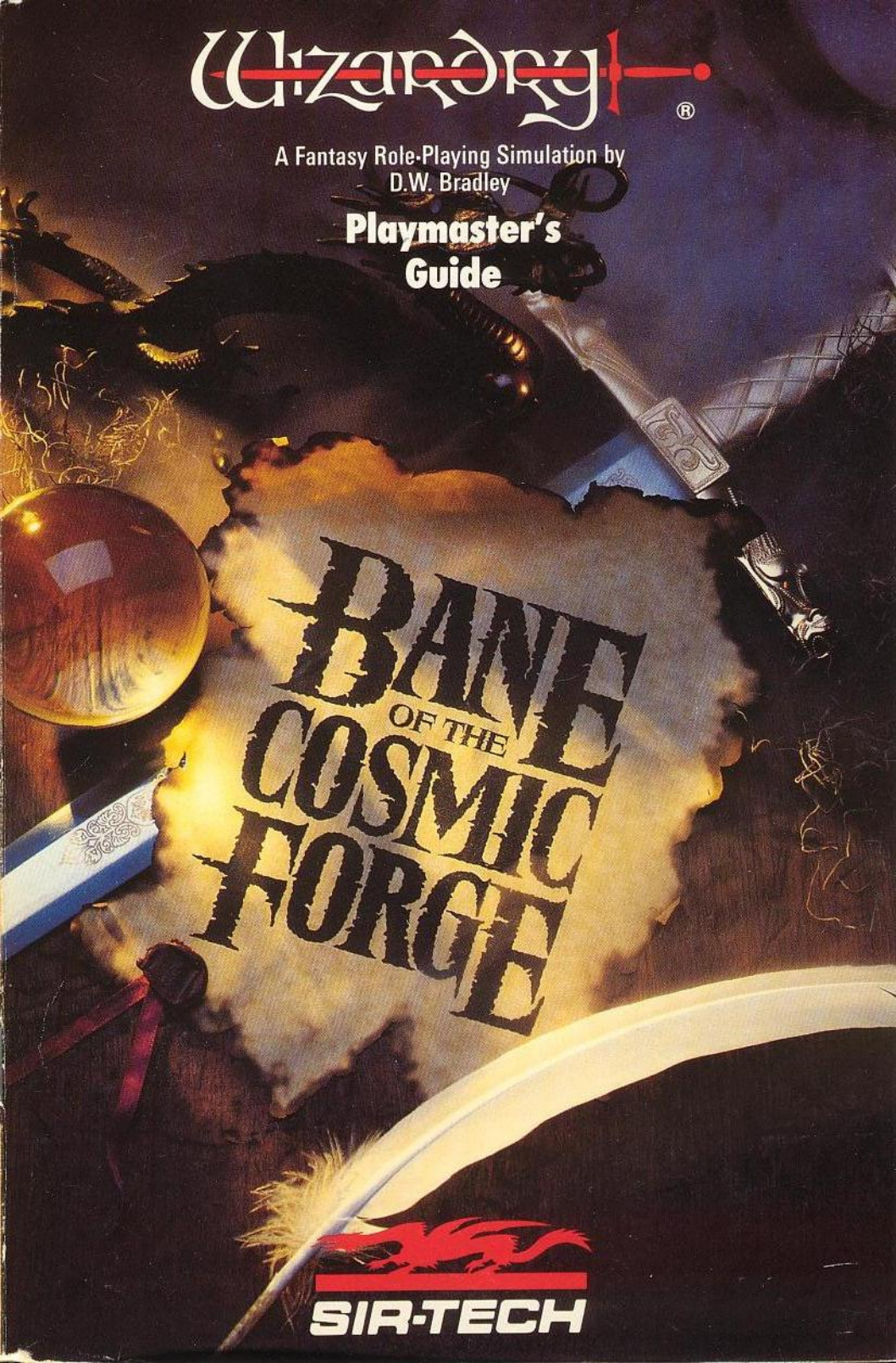


# Wizardry<sup>®</sup>

A Fantasy Role-Playing Simulation by  
D.W. Bradley

## Playmaster's Guide

The background of the cover is a dark, atmospheric illustration. At the top left, a dragon's head and neck are visible, breathing fire. A sword with a blue blade and a silver hilt lies diagonally across the center. To the left of the sword is a glowing crystal ball. In the foreground, a scroll with the title 'BANE OF THE COSMIC FORGE' is partially unrolled. The scroll is lit from below, creating a warm glow. The title is written in a large, bold, black font with a jagged, distressed texture. The words 'OF THE' are smaller and positioned between 'BANE' and 'COSMIC'.

# BANE OF THE COSMIC FORGE



**SIR-TECH**

## We Appreciate Your Comments

As you play *Bane of the Cosmic Forge* and read this manual, you may think of ways in which we can improve this product. If you do, we want to hear your ideas. Suggestions from players have often helped us in the past, and that's a tradition we want to continue. Send your comments and suggestions in writing to:

Sir-tech Software, Inc.  
Ogdensburg Business Center, Suite 2E  
P.O. Box 245  
Ogdensburg, NY 13669  
Attention: Product Development

## Hotline Support - Available 7 days a week

If you need a hint or have a question about *Bane of the Cosmic Forge*, call the Hotline. We've got someone waiting to help you.

**Phone (315) 393-6633**

Monday - Friday -- 4:00 - 7:00 p.m. Eastern Time  
Weekends and Holidays -- 12:00 - 3:00 p.m. Eastern Time

*Bane of the Cosmic Forge* application software  
copyright 1990 by Sir-tech Software, Inc. and D.W. Bradley

All logos, printed graphic designs and printed materials  
copyright 1990 by Sir-tech Software, Inc.

All rights reserved. No part of this software or printed material may be reproduced in any way, or transmitted, in any form or by any means, electronic, mechanical, photocopying, recording, or otherwise without prior permission in writing from the publisher, except by reviewers, who may quote brief written passages to be printed in a magazine or newspaper.

098765432

IBM is a registered trademark of International Business Machines, Inc.  
Macintosh is a registered trademark of Apple Computer, Inc.  
Amiga is a registered trademark of Commodore Business Machines, Inc.  
Wizardry is a registered trademark of Sir-tech Software, Inc.; Reg'd TM - Canada and Japan.

# Wizardry®

# BANE OF THE COSMIC FORGE

A Fantasy Role-Playing Simulation by  
D.W. Bradley



... for my mother ...

## Credits

---

Written and Programmed by D.W. Bradley

Playmaster's Guide written by Brenda Garno

IBM, Macintosh and  
Amiga Technical Programming Gary Speegle

Computer Graphics  
Chris Appel  
Renata Dolnick  
Suzanne Snelling  
Paul McCall

Digitized Sound Programming  
Oblique Triad -  
Jeff Noyle and  
David Triggerson

Sound Effects Steve Miller

Manual Illustrations  
Chris Appel  
Cheryl Bouchev  
Ted Boonthanakit

Special Consultants  
Jeffrey Yette (Medieval Armament Research)  
Todor Fey (Amiga)  
Michael Whittenstein and  
Assoc. Inc. (Apple Macintosh)

## Special Acknowledgements

---

Without the help of the individuals listed here, Bane of the Cosmic Forge may never have been what it is today. Your time, effort and dedication are sincerely appreciated. Thank you for all you have done.

Rob and Norm Sirotek

... for believing in Bane of the Cosmic Forge when it was only a fantasy.

Proofing and Editing

... G. Fay "Dede" Jones - for wading through endless reams of paper.

... Linda Sirotek-Riback - for pointing out that wet noodles, especially in combat, are not humorous.

... Nadia Sirotek - for having the courage to read and refine the first draft.

Playtesters

... for giving your time to search every corner and fight every creature, for your suggestions and for helping Bane of the Cosmic Forge to become a true gamer's dream.

Mike Anderson

Todd Ashley

Andy Backer

Les Berkman

Marty Berkman

Mike Bregar

Gary Brockelsby

Rusel DeMaria

Brenda Garno

Rick Hall

Albert Halprin

Mary Kelly

Jim McDonnell

Zach Meston

Sue O'Reilly

Robert Rosenberg

Monte Schulz

James Shobert

Linda Sirotek-Riback

Peter Spear

Pamela Wagner

Rob Welander





**The Cosmic Forge** - n. [Gk kosmikos universe, L fabrica to make]  
1: the name of an unusual writing instrument (stylus) possessing the unique magical property to make anything written with it come true.

*"There are things you must know."*

"Nearly one hundred and twenty years ago, this castle was inhabited by a most foul Lord and Queen, who terrorized the land and its citizens for many years. Tales of bizarre rituals were commonplace, as were rumors of the King's practice with the mystical arts. Not content with his current dominion and powers, he eventually formed an alliance with another wizard, an entity whose evil matched the King's own. Together, they sought to rule all the evil planes, and in a great magical war, by combining their powers, they began to vanquish them one by one.

"It was in one such battle that they first became aware of the existence of the Cosmic Forge.

"Having used their magical forces to defeat a demonic arch-deity, they listened in delight to its last plea for life. It told them of a magical pen and of its power: when words were scripted with its point, it said, they were forevermore woven into the cosmic fabric, and thus, the events written came true. The King and his ally slew the demon anyway, but not before discovering the whereabouts of this wondrous instrument of power called 'The Cosmic Forge'. Eventually, they were successful in stealing this pen for themselves, and with it, began to script such horrors for the universe that no man has since imagined. It was shortly after obtaining this Cosmic Forge that the two allies became jealous of each other's power, and realizing they no longer had a need for each other, they engaged in a final climactic battle to determine the fate of themselves and of the magic pen.

"That was the last anyone ever heard of them. The castle has since stood vacant. No one knows what became of the King, the Queen or the wizard, or of the magic pen. But now that you are here, my friends, all that is about to change."

## Table of Contents

Journey to the Land of Wizardry	1
What is Fantasy Role Playing?	2
General Program Conventions	3
Creating Play Diskettes, Formatting a Save Game Diskette	3
User Interface	4
Playing <i>Bane of the Cosmic Forge</i>	5
Starting <i>Bane of the Cosmic Forge</i> , Master Options Menu	5
Creating a Character	8
The Party	9
Statistics	10
Naming Your Character	12
Selecting Race	13
Race/Profession Chart	14
Selecting Sex	15
Selecting a Profession and Distributing Bonus Points	16
Rolling Karma, Selecting A Portrait, Selecting Skills	17
Weaponry Skills	18
Physical Skills	19
Academia Skills	20
Distributing Skill Bonus Points, Choosing Magical Spells	21
Equip Before You Explore	21
Additional Character Statistics	22
Reviewing Your Character	27
Equip	27
Assay	28
Merge, Drop, Spell	29
Swag, Use	30
Trade, Edit	31
Skill, Review, Exit	32
Other Character Menu Options	33
Delete PC, Rename PC	33
Adventuring	34
Ordering Your Party, Preparing a Party	35
Entering <i>Bane of the Cosmic Forge</i> (the screen)	36
Touring <i>Bane of the Cosmic Forge</i>	39
Party Options	40
Search	40
Review, Spell, Use, Open	41
Order	42
Rest	43
Disk (Game Configuration, Save Game)	44
Locked Doors	47
Open	47
Knock-Knock	48

## Table of Contents

Treasure Chests	49
Inspect	49
Disarm	50
Open, Spell, Leave	51
Divvying Your Loot	52
Combat	53
Who's There, The Course of Action	53
Fight	54
Parry	58
Equip, Spell	59
Use, Move	60
Hide	61
Run, Breathe, Cancel and Backup	62
Combat Notes and Modifiers	63
Health-Related Maladies	63
Magical Modifiers	65
Statistical Bonuses, Encumbrance	66
Surprise Attacks, Life Insurance	67
Gaining Experience Levels	68
Non-Player Characters	69
Talk	69
Trade	70
Spell, Use, Pool	72
Steal, Fight, Leave	73
Magical Spells	74
Realms, Spellbooks, Spell Levels	74
Power Levels, Costs, Affects and Effects	75
Oratory, Summoning Spells	76
Casting a Spell, To Learn More Spells	77
Fire Spells	78
Water Spells	80
Air Spells	82
Earth Spells	86
Mental Spells	89
Magic Spells	95
Alchemists' Spellbook	100
Mages' Spellbook	101
Priests' Spellbook	102
Psionics' Spellbook	103
Appendix A: Character Races	104
Appendix B: Character Professions	110
Appendix C: Mapping	118
Appendix D: General Hints	121
Index	122



## Journey to the Land of Wizardry

---

The Wizardry program is truly magical. It allows your computer to open a portal to a world far removed from today's high-tech living. There, brave warriors do battle with evil wizards and fearsome monsters for riches beyond compare. It is a place where careful planning and strategy are more important than mere reflexes. You will be able to create and captain a party of valiant adventurers about whose expeditions the troubadours will sing epics for years hence.

*Bane of the Cosmic Forge* is a new generation of Wizardry crafted in the tradition of its predecessors: Proving Grounds of the Mad Overlord, Knight of Diamonds, Legacy of Llylgamyn, Return of Werdna and Heart of the Maelstrom. It was nearly ten years ago when Sir-tech released the first Wizardry. Winning dozens of national and international awards and selling over 2 million copies worldwide, Wizardry has been called the "granddaddy of fantasy role-playing games." It is because of these ten years of experience and Sir-tech's solid devotion to fantasy role playing that you now hold *Bane of the Cosmic Forge* in your hands.

Now in its second generation, Wizardry delivers full-color, animated graphics, digitized sound and true role-playing challenge. But more importantly, *Bane of the Cosmic Forge* delivers fantastic entertainment value. And that's what it's all about.

Journey now to *Bane of the Cosmic Forge* and let your imagination flow through the screen into a world of magic and adventure.

Role playing is just as it sounds. You play the role of something or someone other than yourself. Just like professional actors and actresses, you pretend to be a character, acting and reacting to situations as he or she would.

In fantasy role playing (FRP), you also pretend to be another, but you do so in a *fantasy* world of magic, myth and medieval customs. In this fantasy world, you create characters to role play called Player Characters (PCs). Just like you, these characters have their own individual strengths and weaknesses. You guide them through the fantasy world encountering many things including monsters, traps and riddles. And, of course, as in any situation, your actions in the present will ultimately affect your future.

Player Characters are created with the abilities and skills necessary to deal with fantasy situations. For example, in *Bane of the Cosmic Forge*, you may create an Alchemist who has the power to conjure spells that charm monsters. You may create fighters with weapons sturdy enough to duel the most powerful dragons.

Since you create a group, or party, of six characters in *Bane of the Cosmic Forge*, you achieve a delicate balance of power that one person, all alone, couldn't possibly develop. You'll have spell casters, warriors and thieves. You'll have specialists in the ancient arts of thaumaturgy, alchemy and legerdemain. And you'll watch as your characters grow in experience and power. More importantly, you will enjoy the excitement of seeing the world through the eyes of an Elf, a Gnome, a Mook or a Faerie.

That's fantasy role playing. It's a story you join at the beginning with your party of characters, write as you progress through the adventure and, as you close the cover, savor at the end.

### Creating Play Diskettes

Depending on your version of *Bane of the Cosmic Forge*, you may have one or more master diskettes. Master diskettes are those supplied in your package. You'll need to make a copy of the master diskettes before you can begin play.

The copies you make of the master diskettes are called duplicate scenarios or play disks. Inside your package, you'll find a card with complete directions to help you create these play disks. After you have made your play disks, store the master diskettes in a safe location just in case you should need them again.

### Formatting a Save Game Diskette

*Bane of the Cosmic Forge* is not a game you can play in a single session (unless you've got lots of time and drink a lot of coffee). You will need to save your game along the way. To make a save game diskette, simply format a blank diskette. If you're not certain how to do this, refer to your computer's manual.

*Bane of the Cosmic Forge* will automatically save your game to the disk in drive A. However, you may also save your game to your computer's hard drive or any other drive. If you prefer to do this, see the *Party Options: Disk, Game Configuration* section for instructions to change the default setting.



## User Interface

*Bane of the Cosmic Forge* is, for the most part, entirely menu driven. When you come across a menu, use the arrow keys on your keyboard (the number pad on some computers) to move the selection bar, or "highlight", among the different choices on the menu to the option of your choice. Once that option is highlighted, select it by pressing [RETURN].

Sometimes there's more to do, and you'll need to type information from the keyboard. Talking to interactive characters, solving riddles and typing a character's name are just a few examples. When you've finished typing, Wizardry will expect you to press [RETURN] to indicate you've completed your response. On some computers RETURN is called ENTER, so the command is noted in general by the symbol "←".

## Playing Bane of the Cosmic Forge

### Starting Bane of the Cosmic Forge

Inside your package, you'll find a card which contains complete directions to start the Wizardry program on your system. Remember, however, before you can play Wizardry, you need to make copies of the master diskettes provided in your package.

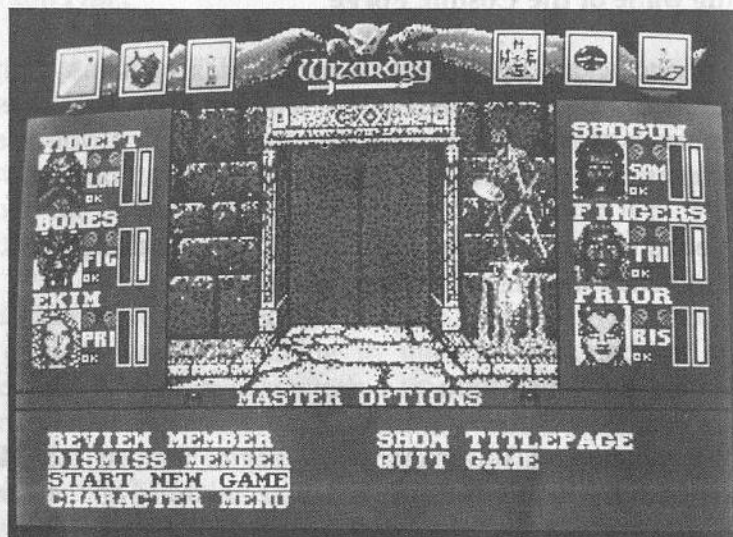
Once you're up and running, you'll see Wizardry's title screen. Hit any key to enter the Master Options Menu.

### The Master Options Menu

Each time you play Wizardry, you'll begin here, at the Master Options Menu. If this is your first time in *Bane of the Cosmic Forge*, you may wish to go directly to the Character Menu to create your own player characters.

**Add Party Member:** This option allows you to get your brood together. Typically, a party has six characters. As you add characters, you will see their pictures in the character window.

**Note:** The "Add Party Member" option should not be used unless you are just beginning the game or wish to start over again. This option loads characters from a master roster of **level 1** characters. All games in progress are saved to disk, and are begun or resumed with "Resume Save Game".



**Review Member:** Review Member gives you a little time alone with one of your characters. You will be able to see the experience level, hit points, statistics and skills of your character. All of these attributes are explained fully in the *Creating a Character* section of this manual.

**Dismiss Member:** If you wish to remove a character from your party, you may use this option to return the character to the barracks.

**Start New Game:** When you select Start New Game, the Master Options Menu disappears, and the game begins. You're off to adventure. If you already have an expedition underway, use the "Resume Save Game" option instead.

**Resume Saved Game:** If you have already begun Wizardry and have saved your game, use this option to begin where you last left off.

**Multiple Expeditions:** You may have more than one expedition going at a single time. All you need to do is use a *different save diskette or hard drive directory for each save game* - when Wizardry saves a game to disk, it overwrites any previous save games on that disk. For example, you may take one party into Wizardry, and then save the game. Using another disk and another party, you may save another game. Keep track of which game is which . . . otherwise, you may find yourself with your little brother's heavily wounded and trapped party . . . and you'll be left to wonder what he's done to yours.

**Character Menu:** If this is your first venture into *Bane of the Cosmic Forge*, you will need to create your own band of characters. Selecting this option, you move to another menu where all of this is possible.

**Show Title Page:** To take another look at the title page, select this option.

**Quit:** You may use this option to exit *Bane of the Cosmic Forge*.



The Player Character is the heart of a good role playing game. You'll become intimately familiar with the characters you create, their strengths, their weaknesses and their habits. You'll know each character as well as you know yourself because these characters are an extension of your imagination.

From the Master Options Menu, select "Character Menu". Next, select "Create PC".



## The Party

Typically, a party consists of six characters. Developing a well-balanced team with diverse talents is one of the major keys to success. An even mix of spellcasters, fighters and at least one character skilled in the thieving arts is often a good blend.

However, before you go about selecting your character's race, sex and profession, it's a good idea to read through your choices first. You'll see what each race and profession can and cannot do. Additionally, you'll find some races are better suited to certain professions than others. By reading through it ahead of time, you can create not only the party you want, but also a party that is well-balanced and capable of the job at hand.

After you've seen the diversity Wizardry has to offer, and have some ideas about the party you'd like to form, fill in the chart below, and use it as a guideline when you're creating your party.

Race	Sex	Profession

Complete information on the races and professions is in *Appendix A and B*. Additionally, the Race/Profession chart which appears in this section can help you to sort out your decisions.

## Statistics

Statistics are the central part of a Player Character, and are influenced by the race you select. In turn, these statistics will help a character enter and succeed in a certain profession. As you read through the available character races, you'll see these statistics mentioned.

Each character has eight statistics. Ranging from 0 to 18, these statistics act as a numerical meter of the character's performance in an area. A character with an 18 strength, for example, could possibly blow down a door or slay the most fearsome opponent. A character with 0 strength, on the other hand, would have trouble just getting out of bed.

**Strength (STR):** Affects any maneuver which requires physical strength. Everything from hurting an opponent to forcing a door off its hinges requires Strength. Strength also affects a character's carrying capacity and stamina.

**Intelligence (INT):** Affects ability to cast and learn spells, determine traps on treasure chests and any other task which requires mental mettle. Intelligence also affects a character's ability to learn new skills.

**Piety (PIE):** Is a character's overall devotion to a subject or a field of study, and affects the ability to develop skills and to learn new spells. Piety also affects the amount of spell power a character gets when he or she gains levels, and further affects how quickly the spell power is recouped. Sometimes, in spite of a low Intelligence, an extremely devoted and persevering character can learn subjects just as quickly as his or her whip-smart friends.

**Vitality (VIT):** Is a character's life force, and affects the amount of hit points and stamina a character achieves. Vitality also affects the ability to heal and be resurrected, and helps to provide the character resistance to poison, paralysis and death in general. If a character's Vitality reaches zero, he or she cannot be resurrected.

**Dexterity (DEX):** The ability to dodge a missile, pop a trap on a treasure chest and avoid a lance. Overall, it is the ability of a character to move his or her body, hands and feet included, in response to any situation. Since Dexterity is so important to movement, it is directly related to the character's natural armor class (the ability to dodge a monster's hit). In combat, Dexterity affects the amount of times a character can hit a monster within a single attack.

**Speed (SPD):** Is the amount of time a character needs to do any given action. The higher the Speed, the faster the character moves or is able to accomplish a task. In combat, this statistic determines how many times a character can attack a monster in one round. Because Speed is also important to movement, like Dexterity, it directly affects the character's natural armor class.

**Personality (PER):** Is the overall friendliness of a character, and affects the way a character interacts with NPCs in the dungeon. Characters with high Personality tend to be extroverted and charismatic. Low Personality characters, on the other hand, are more introverted and shy.

**Karma (KAR):** Affects *everything* your character does and acts as a sort of ethical meter. While its effects are somewhat mysterious, characters with high Karma are generally happy-go-lucky individuals. Characters with low Karma tend to be less lucky in life, and have an inclination toward lesser dealings.



### Naming Your Character

You'll begin by entering the name for your character. You may name your character anything you like. Remember however, that the character's name may not exceed seven letters and that two characters cannot have the same name. After you have named your character, its window will appear.

If you accidentally type your character's name incorrectly, and you find yourself with a fighter named "Booby" instead of "Bobby", you can use the "Rename PC" option to change his name.

### Selecting Race

Just as you and I are Human, your characters are of a specific race, too. Within Wizardry, there are eleven different peoples. Each race has its own benefits and shortcomings, and some even seem specially destined to enter certain professions.

Selecting a race for your character is a delicate process; once you pick a race for a character, it is for life, and you may not change it later on. A character's race determines his or her statistics, such as strength or intelligence, resistances and personality. Ultimately, a character's race determines which professions he or she may enter. Complete information on each character's race is in *Appendix A: Character Races*.

The reference chart on the next page shows you how the different races match up to the separate professions. The numbers you see at the intersection of a race and a profession (7/8, for example) represents the amount of bonus points a particular race needs to enter a profession; the first number is for males, the second for females. In general, the lower the number, the easier it is for the character to enter the profession.

In many cases, a female character will need more bonus points than her male counterpart to enter a profession. While this may seem like a hindrance, keep in mind that female characters are typically more personable and have a higher karma than male characters.

## Race/Profession Chart

## CHARACTER RACES

## CHARACTER PROFESSIONS

	HUMAN	ELF	DWARF	GNOME	HOBBIT	FAERIE	LIZARDMAN	DRACON	FELPARR	RAVULF	MOOK
FIGHTER	3/5	5/7	1/3	2/4	4/6	7/9	0/2	2/4	5/7	4/6	2/4
MAGE	4/4	2/2	6/6	5/5	5/5	1/1	7/7	5/5	2/2	6/6	2/2
PRIEST	4/4	2/2	3/2	2/1	6/6	6/6	12/11	8/7	5/5	0/0	6/6
THIEF	3/3	3/3	6/6	6/6	3/3	2/2	4/4	2/2	2/2	4/4	6/6
RANGER	4/6	8/10	7/8	8/9	8/10	12/14	13/12	5/6	8/10	7/9	7/9
ALCHEMIST	9/9	7/7	13/13	11/11	9/9	5/5	13/13	9/9	6/6	12/12	9/9
BARD	9/8	7/6	15/14	15/14	6/6	2/2	18/17	11/10	4/3	10/9	9/8
PSIONIC	14/15	16/17	13/12	15/16	14/16	16/18	16/15	13/14	14/16	14/16	9/10
VALKYRIE	12/12	12/12	9/9	11/11	14/14	17/17	13/13	11/11	13/13	10/10	15/15
BISHOP	14/14	10/10	15/14	12/11	17/17	13/13	25/24	19/18	13/13	12/12	14/14
SAMURAI	15/17	16/18	19/20	20/21	17/19	12/14	19/20	16/17	12/14	19/21	15/17
MONK	15/17	14/16	17/18	15/16	19/21	15/17	22/23	18/19	13/15	15/17	19/21
NINJA	17/19	16/18	15/17	17/19	21/23	19/21	16/18	15/17	15/17	18/20	18/20
LORD	18/19	18/19	17/18	18/19	18/19	21/22	23/24	19/20	19/20	15/16	19/20

\* of Bonus Points for a Male  
of that Race to enter that Profession.

3
4

\* of Bonus Points for a Female  
of that Race to enter that Profession.

After you select your character's race, you'll see that he or she has been given a profile set of minimum base statistics. Additionally, you'll see your character's hit points and stamina.

**Hit Points:** Hit Points represent the amount of damage your character can endure before death. For example, let's say your character has 10 hit points when in full health. In combat, a monster bashes the character and causes eight points of damage! Your character's hit points would now show 2/10, the "2" reflecting the amount of damage the character can now endure before death, and the "10" to remind you of the character's hit points when he or she is in full health.

**Stamina:** Stamina is a measurement of your characters' endurance. They can only walk so far, or fight so much, before they fall flat on their faces from exhaustion. When a character's stamina reaches zero, that's exactly what happens! Stamina is listed as a percentage of a character's condition when he or she fully rested. The higher the percentage, the better. A fully-rested character can fight harder and hit for more damage than a tired character. When any character's stamina becomes low, it's time for a rest.

## Selecting Sex

Next, you'll select your character's sex. Males tend to be stronger than females. However, female characters have a higher personality and karma. When you choose your character's sex, you will see a modification to the character's base statistics.

### Selecting a Profession and Distributing Bonus Points

There is a total of fourteen fields of study which your character may pursue. To the right of his or her vital statistics, you will see a listing of the professions the character qualifies for. Because each profession has minimum requirements for entrance, you may not see every possible profession among your choices. You can check out these minimum requirements and everything else about any profession you like by looking in *Appendix B: Character Professions*.

When you select your character's profession, you may see an increase in some of the character's statistics. The points which were added to the statistics were automatically taken from your character's bonus point total to allow him or her to meet the minimum entrance requirements for that profession.

Sometimes, even after you've met the requirements of the profession, you may have bonus points left over. To distribute your extra bonus points, move the pointer using the [UP] and [DOWN] arrow keys to the statistic you want to change. Add points by pressing the [LEFT] arrow key. Subtract points by pressing the [RIGHT] arrow key. When you're finished, press [RETURN]. You can change the statistics any way you like, but you must use up all of the bonus points you've been given. Also, you cannot push a statistic below its original value or above 18.

Keep in mind that it won't do you much good to have a muscle-bound Mage or a weak, but intelligent, Fighter. Add the extra points where they're sure to make a difference.

### Rolling Karma

Next, Wizardry lets you "roll" your character's karma. When you're feeling lucky, just press [RETURN] to stop it. No matter what number you get, even if it's low, remember that there's no such thing as a "bad" karma. In fact, within Wizardry, you'll meet people with both high and low karmas. Since birds of a feather flock together, having a mix of karmas in your party may prove beneficial.

### Selecting a Portrait

Wizardry comes equipped with many different faces for all kinds of characters. To view the portraits, use the [LEFT] and [RIGHT] arrow keys. When you come across a face that's perfect for your character, press [RETURN]. If you decide to play the plastic surgeon and wish to change the character's looks later on, just choose the "Portrait" option again from the Character Menu. Wizardry will allow you to view the portraits and select another more fitting picture.

### Selecting Skills

Just like you, your characters have certain skills. However, when you first create your characters, these skills are a bit on the light side. Typically, they have but a few points in their professions' area of expertise. To help you broaden your character, skill bonus points may be distributed among his or her skill choices.

In general, there are three categories of skills in Wizardry: Weaponry, Physical and Academia. Within each of these categories, there are many skills, all of which are explained in the next few pages.



### Weaponry Skills

In general, Weaponry skills affect a character's ability to handle his or her weapon. Eventually, through experience and practice, your characters may achieve up to 100 points in a skill area. As your character practices the Weaponry skills (equipping and using a weapon in combat, blocking a blow with a shield, etc.), points will automatically be added to the particular skill to reflect your training. Of course, it's always a good idea to add skill points "manually" when your character gains levels.

**Wand & Dagger:** The talent of wielding daggers, wands and other small items used as weapons in combat.

**Sword:** Any sword, including the katana, used as a weapon in combat is covered under this skill.

**Axe:** This ability covers any axe, such as the battle or hand axe, used as a weapon in combat.

**Mace & Flail:** The talent needed to use any mace-like item, including the flail or hammer, as a weapon in combat.

**Pole & Staff:** The mastery of any pole & staff, such as a halberd, bo or staff, used as a weapon in combat.

**Throw:** The demonstrated ability to be on target when any weapon is thrown. This includes such things as shurikens or darts or potions, and weapons which are accidentally thrown in combat (your fighter mistakenly lofts his exceptionally expensive sword at a monster) are covered under this skill.

**Sling:** The ability to use any weapon which consists of a leather strap and two cords which, when whirled and released, hurls bullets at an opponent.

**Bow:** The flair of handling any bow which fires arrows and is used as a weapon in combat.

**Shield:** The art of using a shield effectively to block an opponent's blow while fighting or parrying.

**Hand & Feet:** The talent of using one's hands and feet as lethal weapons to strike and hopefully kill an opponent.

### Physical Skills

Physical skills generally affect a character's ability to do things which require talents of the body or voice; at best, a character can have 100 points in a Physical skill. For instance, the skilled Ranger will keenly perceive a piece of straw that looks out of place in a giant hay pile. The unskilled character, on the other hand, will blindly walk down the hall, oblivious to the giant red sign that says, "Secret Door Here!" As with Weaponry skills, your characters become more proficient in the Physical skills arena when they practice a particular skill, and are automatically given points to reflect their training. The "Scout" skill, however, must be "manually" raised when a character gains a level (of course, you can add points "manually" to any other area as well).

**Scout:** The knack of seeing and finding things such as secret doors, hidden entrances or buried items others seem to pass by. *You must add points manually to "Scout" to increase your character's proficiency.*

**Music:** The art of playing musical instruments and bringing forth from them different magical spells.

**Oratory:** The vocal discipline required to properly chant a magical spell. Without good oratory, spells meant for the monsters may fizzle or backfire on the party.

**Legerdemain:** The ability to pickpocket (steal) items or gold from NPCs without their knowledge or permission.

**Skulduggery:** The delicate skill of inspecting and disarming traps on chests and picking locks on doors.

**Ninjutsu:** The legendary art which allows characters to hide themselves from their opponents. For the Ninja and Monk, proficiency in Ninjutsu helps to lower their armor class rating.

### Academia Skills

Academia skills affect a character's ability to learn and understand the ways of the Wizardry world. These skills also affect the magic users' ability to learn and understand spells. Academia skills don't develop as quickly as Physical or Weaponry skills, but with practice, all but the magical skills will increase automatically. As with all the skills, the highest amount a particular skill can reach is 100 points.

**Alchemy, Theology, Theosophy, and Thaumaturgy** - these magical study skills must be advanced manually by adding skill points whenever a character gains a level; these are *studied* skills, not practiced. Without study, the character will never learn spells beyond the elementary.

**Artifacts:** The ability to effectively use and invoke magical items during combat depends on this skill. Without a developed Artifact skill, there is a chance the item's power will fizzle or backfire on the party.

**Mythology:** The ability to recognize, while in combat, the true names of monsters.

**Scribe:** The ability to successfully invoke the magical power of a scroll during combat.

**Alchemy:** The art of learning, practicing and exercising Alchemist spells.

**Theology:** A pursuit of divine interests leading to the study of Priest spells.

**Theosophy:** The possession of mental and spiritual insight that allows its possessor to study Psionic spells.

**Thaumaturgy:** The path of study followed to Mage spells.

**Kirijutsu:** The deadly skill and knowledge of the body which allows its possessor to strike a vital or critical area, hopefully killing an opponent with a single blow.

### Distributing Skill Bonus Points

To distribute your character's skill bonus points, first choose the category: Weaponry, Physical or Academia (just press [RETURN] to move between the three). Then, move the arrow to the skill you wish to add points to, and use the [LEFT] and [RIGHT] arrow keys to add or subtract the points. Remember, you cannot adjust the points lower than their original amount. Additionally, once you add points to a particular skill area and leave it, returning will not permit you to deduct the just allocated skill points.

### Choosing Magical Spells

Depending on your character's profession, you may be able to select some initial spells for your character's spellbook. Using the arrow keys, move the highlight from realm to realm to view the spells available to you. (There are six realms in Wizardry; each is fully explained in the *Magical Spells* section of this manual.)

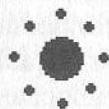
When you see a spell you like, press [RETURN] to select the realm. Then, highlight the spell name, and press [RETURN] again. The spell will be permanently written into the character's spellbook. If you are allowed to select more than one spell, just repeat the process.

### Equip Before You Explore

Before you and your brood go off in search of fame, fortune and experience points, you should equip your characters' items. Otherwise, that expensive set of plate mail will just sit in your backpack. (See *Reviewing and Equipping Your Character*.)

### Additional Character Statistics

Aside from the statistics and attributes you selected while creating your character, you will see others which you may not be familiar with. Each of these attributes is explained below.



**Age:** Adventure begins early for these youngsters. Its symbol, the planets moving around the sun, represents the passage of time. Each occasion your characters "Rest", they get a bit older (only by 8 hours, mind you). Eventually, their vitality may lessen and they may, in general, start to show signs of their age. However, starting young, all of your characters have a good long life ahead of them.



**Rebirths:** It's an unfortunate fact, but even the best of the best fall prey to a monster's attack and die. When this happens, characters lose a point of vitality. However, your character can be reborn by magical and other means. The number you see next to the kneeling character's icon tells you which life he or she is currently enjoying.

**Level (LVL):** As your character learns the ways of Wizardry, he or she will become more experienced. To reflect this experience, the character earns experience levels which in turn give the character greater powers and abilities.

**Rank (RNK):** As your character becomes more experienced, he or she will earn ranks within his or her profession. The rank serves as a title of sorts, and helps to identify the character as an outstanding member of the profession.

**Experience Points (EXP):** As your characters slay monsters and perform special tasks, they are awarded experience points. As these experience points build up, your PCs will gain experience levels (LVL).

**Monster Kill Statistic (MKS):** For the hack-slasher this is the all important statistic. The number you see represents the number of monsters you have, in one way or another, sent to the Grim Reaper.

**Condition (CND):** Normally, a character will be "OK", suffering from no illness and generally healthy. However, your character may, at some point, become less than healthy. He or she may become Afraid, Asleep, Blinded, Dead, Insane, Irritated, Nauseous, Paralyzed, Poisoned or Stoned. For all of these maladies, except stoning and death, resting may eventually remedy the condition, although sometimes magical intervention is useful or required. See *Combat Notes: Health-Related Maladies* for more information.

**Gold Pieces (GP):** Just as it sounds, the number you see here represents the amount of gold the character currently holds. Gold is very important within the Wizardry world. Among other things, gold allows you to buy goodies, and since it's also used by monsters and NPCs, you don't have to worry about any currency exchange problems.

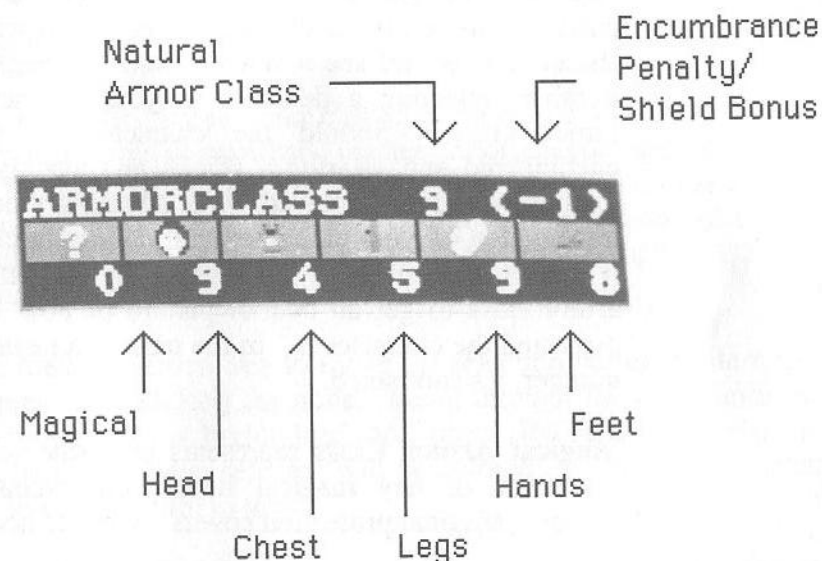


**Carrying Capacity (CC):** All characters, because of race, strength and other factors, have a limited amount of weight they can successfully carry without a lot of encumbrance. If your character is carrying too much weight, he or she is typically easier for the monsters to hit, and will likely have some trouble fighting well (See *Combat Notes: Encumbrance* for more information.) In general, it will take more stamina just to move around. However, Wizardry will let you know when your character is overloaded. In the character "Review" screen you will see Carrying Capacity's color has changed to:

- \* *light blue* if they are carrying 66% to 74% of their total capacity
- \* *yellow* if they are carrying 75% to 89% of their total capacity
- \* *red* if they are carrying 90% or more of their total capacity.

It is possible for your character to carry more than his or her carrying capacity. However, any character who attempts this heroic feat of muscle will likely exhaust his stamina so quickly that he'll pass out from exhaustion a few steps later.

**Armor Class (AC):** A character's armor class describes how well he or she is protected from attack. Armor class ranges from a +10 (virtually naked) to a -10 (a sherman tank). Without question, the lower the armor class, the better. In Wizardry, there are several different armor classes:



- \* **Natural AC** reflects the character's ability to avoid being *hit* by a monster. Certain races, such as the Faerie, have a genetically low natural armor class. Characters who are fast and dexterous or those skilled in Ninjutsu also have a low natural armor class.

- \* **(Encumbrance Penalty/Shield Bonus)** offsets your natural armor class and is consulted whenever your character is attacked. If your character is encumbered, he or she doesn't move well, and therefore is easier to hit. In this case, you would see an encumbrance penalty - a positive number reflecting an increase in your character's armor class. However, if the character is equipped with a shield, you would see a shield bonus - a negative number reflecting a decrease in your character's armor class. Should the character be both encumbered and wearing a shield, and average of the two would be displayed. When Wizardry needs information on your character's natural armor class, it adds the number in parentheses to the natural armor class to get an overall picture of how well protected the character is. In the case of a negative number, it's subtracted.
- \* **Magical Armor Class** represents the armor class protection of any magical items your character equips. Magical protection covers the entire body.
- \* **Body Armor Classes** show you how well a particular body part is protected against *penetration* by a monster's weapon once the character has already been hit. Even if a monster hits your character, its weapon may never penetrate the armor on that body part.

To view the character you've just created, select the "Review PC" option. Once you're reviewing, you can select from any of the options listed below. Some of these options are not available from the Character Menu, but you will find all of them once you have begun play and entered Wizardry.

### Equip

When you first create your character, he or she will be carrying a few basic items (a sword and leather armor, maybe) appropriate for the profession you have selected. To make these items useful, you need to equip them. After all, that new helmet won't offer you much protection if you don't take it out of the hat box. Select "Equip" to do so.

Use the [UP] arrow key to move the selection bar to the item list, or press [RETURN] for none. Move through the items until the one you desire is highlighted, and press [RETURN] to select it. The item you have selected will be colored; the others you opted not to use will turn to gray.

**Note:** Just like everyone else, your character only has two hands. When you select your primary weapon, it is held in one of the character's hands, and is the first to be used against a creature in combat. You may select a secondary weapon, a shield or another item to fill the secondary spot. However, if your primary weapon is two-handed, you will not be able to select a secondary item.

## Assay

To understand the details of any item use "Assay". You'll get some basic information about the item which will help you to understand its makeup and usefulness.



The top line lists the class of the item followed by its range. In the lines under this, you will see many letters. These letters aren't a word puzzle, but are the first letters of the races and sexes (first line) and professions (second line) which can use the item. If a letter is highlighted, a character of that race, sex or profession may use the item.

If a certain skill is required, you will see that listed next. Following this, for weapons, you will see the fighting modes available and the weapon's classification highlighted as a primary or secondary weapon (P/S). For other items, such as scrolls and potions, their power is listed. Assay will not, however, show you the power of magical items other than scrolls or potions (you need to cast an *IDENTIFY* spell for items such as this).

Assay will also tell you where the item should be worn (head, foot, etc.); for weapons, "Assay" lets you know whether the weapon is one- or two-handed. Lastly, the weight of the item is shown.

## Merge

In some cases, you can carry more than one item in an item slot. Items which may be grouped, such as arrows or missiles, are stored this way. Each item slot can hold up to 250 such items. So, if you receive 300 arrows, 250 would be stored in one slot and 50 would be stored in another. After you use up some of the arrows in one slot, say you now had 200 of the 250 arrows left, you could merge it with the group of 50. Using this option, you would free up an item slot.

"Merge" can also be used when you want to put two items together. To "Merge" an item, highlight the first item and press [RETURN]. Then, highlight the second item and press [RETURN]. Either the items will merge into one item, or Wizardry will beep to let you know there's not effect.

## Drop

If your character is holding an item he or she no longer wants, drop the item using this option. Once you "Drop" an item, it's gone for good. Of course, you may find another later on. Sometimes it is better to sell your unwanted items to the NPCs in Wizardry (See *Non-Player Characters*). Hold your own mini-garage sale, and you'll get rid of the item while gaining a few gold pieces to boot. On occasion, Wizardry won't let you drop an item. Generally, the item may be something you'll need later on.

## Spell

While reviewing your character, you may cast a spell of the non-combat variety such as healing or protection spells. Complete information on spells can be found in the *Magical Spells* section.



## Swag

Each character carries his or her own swag bag: a place where they store things. If you wish to "Swag" an item, select this option to put it into the bag. Each bag can hold twelve different items, but none of the items can be equipped. All grouped items such as arrows and missiles count as one item.

You can use an item directly out of the Swag bag at any time unless you're in combat. In the heat of battle, you've set the Swag to the side, so you'll need to get the item out of it first. See *Combat Options: Equip*. Likewise, to "Assay" an item, you must remove beforehand.

## Use

If there is an item you'd like to use in one way or another, select the "Use" option. Then, just pick the item you wish to use. Depending on the item you've selected, "Use" does one of two different things:

- \* Invokes the special powers of a certain item.
- \* Allows you to read a book while in the character's Review screen. If you should find a spellbook in the dungeon, the "Use" option will also allow you to read the spell, and if your character can learn it, you may write it into his or her spellbook. Be careful not to waste the spell by writing it into a character's spellbook when he or she already knows the spell.

If you select an item that has no effect or is used only in combat, Wizardry will beep at you to let you know.

## Trade

Occasionally, one of your characters may find a really neat trinket in the dungeon and wish to give it to another character (possibly the one screaming "Gimme that!"). To comply, select the "Trade" option. Here, you may trade gold and items between characters.

## Edit

"Edit" allows you to change some of the basic features of your party while an expedition is in progress. You may change a character's name, portrait or profession. You may also replace a current party member with a brand new character.

**Change Name:** Just like the "Change Name" in the Character Menu, this option allows you to give your character a new name. Remember, however, that Wizardry will not allow you to have two characters with the same name, or a name longer than seven letters.

**Portrait:** Here, you can view all the various faces Wizardry has to offer, and if you like, you may select a new one for your character.

**Change Profession:** When your character feels it's time for a change of pace, "Change Profession" allows him or her to switch careers mid-life. On your screen, you'll see all of the professions that the character qualifies for. Keep in mind, each profession has its own minimum entry requirements, so you may not see every possible choice among your selection (see *Appendix B: Character Professions* for information on minimum entry requirements). Select one of the professions you see, or

none at all. You immediately begin learning the skills of your new profession, and stop learning those of the former. However, your character drops to experience level 1, which will allow you to learn the new spells and skills more quickly, and his or her statistics will change to reflect the minimum requirements of the new profession.

**Replace:** Occasionally, you may wish to "Replace" a current member of your party with a new, level one character from your master roster of characters; the character must exist in the master roster prior to entering that day's adventure session. "Replace" is useful if a character has died and can't be resurrected or if he or she turns out to be a dud later on in life.

**Caution:** When you "Replace" one character with another, the character you remove from your party is gone forever. So, be careful not to send your prize Samurai packing off to Florida and out of your adventure.

## Skill

To review a character's skills, select this option. When you do, the character's Weaponry skills will appear. You may also review the Physical or Academia skills by highlighting the category and pressing [RETURN].

## Review

To look at another character, select the "Review" option.

## Exit

Select "Exit" to return to the Character Menu.

## Delete PC

Occasionally, you may need to free up space in the master roster so you can create new characters (the master roster holds up to 16 characters). Other times, you may create a character who is less than you had hoped for. He failed Wizardry 101, and even tripped on his way out of class. It's times like this that you are left no choice but to select the "Delete PC" option. Remember, when you delete a character, it's for good.

## Rename PC

If you want to change your character's name, use this option. Remember, the name may not exceed seven letters, and you cannot have two characters of the same name.

The essence of Wizardry is adventuring. It's time to accept the challenge and leave the safe confines of the outside world and venture into the unsafe, but potentially lucrative, corridors of *Bane of the Cosmic Forge*.

Successful adventures consist of at least nine stages:

1. Preparing a well-balanced party and continuing to develop this balance as they grow, becoming more experienced and more powerful.
2. Exploring everywhere and searching for hidden items and passages.
3. Mapping accurately so you can return to certain spots or recall a specific location, although this is not necessary to win the game.
4. Fighting the monsters (successfully).
5. Resting your party from time to time.
6. Talking, bartering and interacting with Non-Player Characters.
7. Taking good notes about all you see and hear.
8. Using this knowledge along with your intuition and logic to complete the quest.
9. Staying alive!

Each time you resume your expedition and are ready to begin play, take a minute to check out your characters. If anyone is without full hit points or incapacitated, a spell or a few hours of rest is advisable.

## Ordering Your Party

Generally, only the first three party members can suffer damage from a physical attack by the monsters. However, some monsters may be equipped with ranged weapons that allow them to hit further into your ranks. Other monsters can bend the laws of the universe. They'll sneak up on your lowly Mage, cowering in the sixth position, and squash him to bits! For instance, a Giant may step over some of your characters to get at the weaklings in the rear (again, squashing them to bits). Additionally, a Spirit may float through the wall behind your party determined to attack. Lastly, monsters may cast spells on any or all members of your party.

Essentially, the strong, fighting characters should be toward the front. Spell casters and weak or injured characters with low hit points should be toward the rear of the party.

## Preparing a Party

Depending on your progress in *Bane of the Cosmic Forge*, you'll need to select one of the two routes below to get your party together:

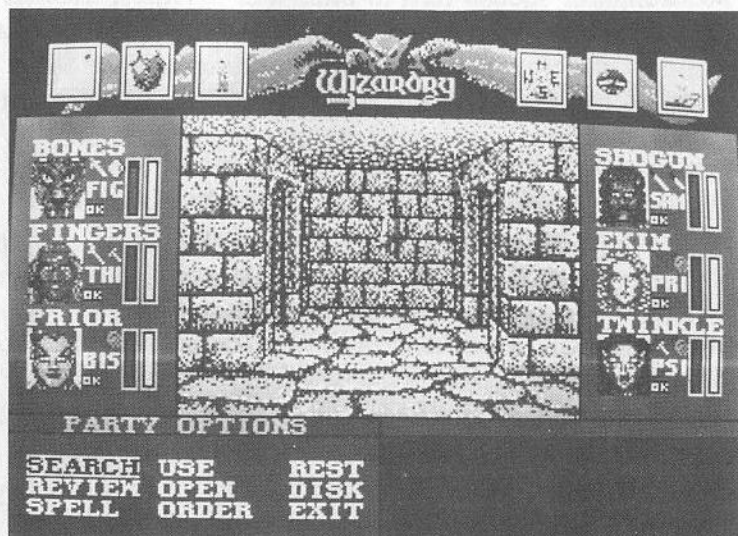
**Starting a New Game with LEVEL 1 CHARACTERS:** from the Master Options menu, select "Add Party Member". You'll see the names of your characters. Form your party, and then select "Start New Game". You only need to use this option once - when you are beginning Wizardry from scratch.

**Resuming a Saved Game:** If you already have an expedition underway, select the "Resume Save Game" option.



## Entering Bane of the Cosmic Forge . . .

The swords are readied; shields are held aloft; magic users prepare their incantations. When you first enter Wizardry, you'll see the screen below.



Although this window looks just like the Master Options window, it is here that you will watch monsters as they jump from your swords, view the world as you move through it and wonder as riddles unfold. Each small window on the screen has a significant meaning.

Along the top of your screen, you will see six small boxes which represent magical spells that can be cast to enhance your characters' strengths, abilities and protections. Although these boxes may not be active right now, they can have a majestic power with the helping hands of the right spell caster. From left to right, you will find . . .

**Enchanted Blade:** Empowers swords with an extra "umph" so that it's easier to hit the monsters and penetrate their armor.

**Armorplate:** Provides magical armor protection to the party by lowering everyone's armor class.

**Magic Screen:** Gives the party extra resistance to magical spells by reducing the amount of damage, the power or the effectiveness of magical spells which come the party's way.

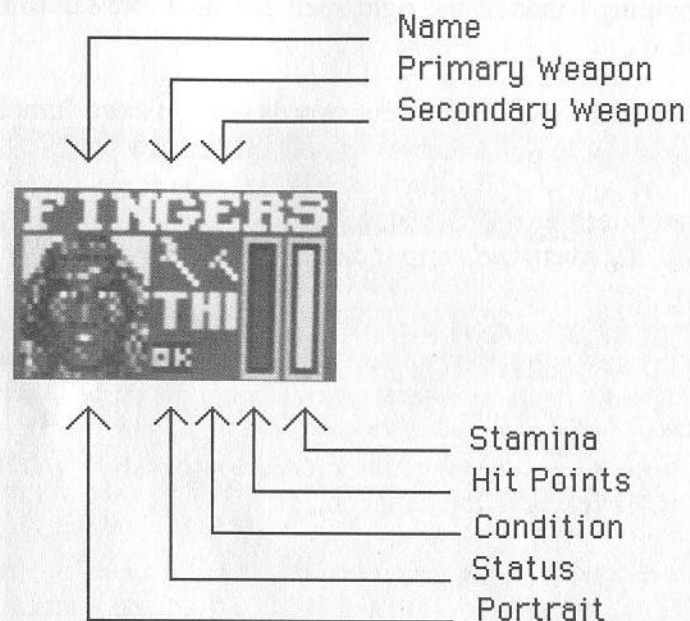
**Direction:** Gives the direction (north, south, east or west) that the party is facing in the dungeon.

**Detect Secret:** Magically detects the presence of hidden items, unseen passages and the like, and "blinks" when your party passes such mysteries.

**Levitation:** Lifts the party several inches off the ground and provides protection from falling into things such as pits. Of course, Levitation will not save your party if you wander off the top of a castle tower.

The window in the center of the screen holds all of the action. The dungeon's walls, flowing water, unknown creatures, spells from the hands of a magician . . . you will see it all in this window.

The windows to the right and left of the action window hold your characters' icons.



Each icon contains the character's name, portrait, profession, status, condition, hit points, stamina and weapons selected (or a bare hand if there's nothing in that hand).

The message bar alerts you to any changes in your party's state, or a certain course of action. For example, you may see "Resting...", "An Encounter" or requests for you to make a choice among different options.

Along the bottom you see the Party Options Window and the Movement Window.

## Touring Bane of the Cosmic Forge

### Moving

The Movement Window serves as a reminder of your possible directions. There are two methods of movement in *Bane of the Cosmic Forge*: Turn and Move. By pressing the [DOWN] arrow key, you switch between the modes.

**Mode of Movement -- (TURN):** "Turn" allows your party to *turn* in the direction of the arrow pressed or, for the [UP] arrow, advances your party one step forward. If you *turn* to the right or the left, you occupy the same space, but face in a different direction.



Turns you left

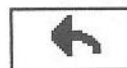


Moves you forward



Turns you right

**Mode of Movement -- (MOVE):** "Move" allows your party to *move* over one space or forward a space in the direction of the arrow pressed. If you press the left arrow key, for example, your party would move one space to the left; you'd still be facing the same direction as you were before taking the step. "Move" is very helpful when you're searching long walls for buttons or caches (among other things).



Moves you left



Moves you forward



Moves you right

From the Movement Window, press [RETURN] to enter the Party Options Menu. As you and your party stroll through the dungeon, there are several things you can and may need to do.

### Search

You walk into a room, and something just tells you there's a heap of gold buried in that dirt floor. Maybe it was your Ranger, maybe it was your magician or perhaps it was just intuition that told you. When you feel compelled in such a way, use this option to check the party's immediate area: the wall you're facing, the floor you're standing on and the dirt below.

If your characters' scouting skills are good enough, you won't need to search each and every molecule of rock you pass. At least one character skilled in scouting could alert you to something which appears out of the ordinary . . . a misplaced rock, stirred up dirt in a corner, a bump on the wall . . . and save you a lot of time searching in the process.

The *DETECT SECRET* spell can also be very helpful in your expedition. When you cast *DETECT SECRET*, you'll see the "eye" at the top of your screen open. If the eye "blinks", search the area immediately. Although you may not necessarily find anything, a blinking eye definitely means something is up.

### Review

Just like the "Review" option in the Character Menu, you may use this option to view your characters or equip different items. For full information on characters in review, see the *Creating a Character* section of this manual.

### Spell

The ancient arts of your magicians can be called into play while strolling through Wizardry using this option. After selecting "Spell", you will need to select a character to cast it. Next, you'll select the spell and its power level. Lastly, you may be asked to select the target of the spell, such as a character in need of some healing. For complete information on spells, see the *Magical Spells* section of this manual.

### Use

Some items, such as potions or scrolls, have a specific use. For example, you may want to use a potion to cure a character who is poisoned. Other items, such as books, can be read by using them. To use an item, select the "Use" option, the character who wishes to use an item, followed by the item you wish to use. If the item you select has no particular use, or is not useful at that time, Wizardry will tell you the item has "No Effect".

### Open

You may come across a locked door in the dungeon, or perhaps a treasure chest, that your party members would like to open. To do so, select this option. If there is a locked door or a chest in your presence you'll see your character's attempt to



determine the trap on the chest or watch them push their thieving skills (skulduggery) to the limit with a locked door. Should either of these situations present themselves, refer to the *Treasure Chests* or *Locked Doors* section of this manual. There you will find complete instructions to help you get the goodies or to get into trouble.

## Order

Occasionally, you may need to adjust the marching order of your party (if your magician is leading your party into combat or your fighters are asleep, for example). Select the "Order" option to do so. On the left side of the screen, you will see your characters' names. Select the leader of your party, and press [RETURN]. His or her name will disappear from the list. Now select the second party member in rank and press [RETURN]. Repeat the selection until all of the members are just where you want them.

Remember, monsters typically attack the first three characters in your party. Therefore, it's best to keep the tough characters with high hit points up front. Characters who are suffering from a malady or are generally weaker than their fighting counterparts, such as spell casters, should go to the rear of the party.

## Rest

To replenish your characters' stamina, cure their wounds, recoup some from a nasty condition and replenish your magic users' spell power, it is necessary to rest your party. Each occasion your characters are able to fully rest, they receive eight hours of sleep along with all its benefits. They also age by eight hours (3 full rests = 1 day). You may press [RETURN] at anytime during the rest to wake your characters early.

Unfortunately, this wondrous calm may be disrupted by a wandering group of monsters who come across your party, pleasantly napping around a fire, and swarm down upon them. With all the commotion, some of your characters may wake up immediately to participate in the combat. Other characters, the really sound sleepers, may remain asleep. If a sleeping character is hit, he or she will wake up right away.

**Caution:** If you have a poisoned character in your party, try to cure the character of the poison before you "Rest". Some poisons are so strong that they will kill the character before the neutralizing effects of sleep have a chance to work. Additionally, if your character is equipped with a cursed item, try removing the item from the character with the *REMOVE CURSE* spell before you "Rest".

## Disk

To configure *Bane of the Cosmic Forge* to your computer's specifications or to save your game in progress, select the "Disk" option.

**Save Game & Resume:** It's important to save your progress and save it often. Should your party die or do something that was other than originally intended, you'll have something to fall back on. Depending on your selections for Game Configuration, you may be asked to insert your Save Game disk in a disk drive. Remember, when you save a game, it overwrites the previous save game. So, you want to use different disks.

**If you are using a floppy disk for your saved games, the disk you use must be formatted.**

**Save Game & Quit:** Just like the Save Game option above, your progress will be saved to disk. However, instead of going back to play, you will exit the game. When it's time to adventure again, select the "Resume Save Game" option in the Master Options menu.

**Quit Game - No Save:** If something traumatic has happened, this option is ideal. Since your game is not saved when you use this option, you will be able to resume an earlier save game instead.

**Game Configuration:** You may use this option to customize *Bane of the Cosmic Forge* to your exact liking.

**Sound:** There are two categories of sounds in Wizardry, the monster sounds and the dungeon noises. You can individually adjust the level of each of these sounds to your liking. First, you'll see a switch for each sound (monster sounds first, dungeon noises second) which allows you to turn the sound either on or off. If either of the sounds are on, you can then adjust the level of each sound: 1/2 volume or full volume.

**Delay:** Delay lets Wizardry know how long you'd like messages to stay on the screen during combat. "1" is the fastest; "18" allows you plenty of time to read each. For most cases, "8" is a good setting.

**Level of Play:** Either novice, normal or expert, you can tell Wizardry how challenging you'd like your adventure to be.

**Input:** You may use your mouse or keyboard to interact with Wizardry. This option just lets you choose between the two.

**GMode:** Allows you to reference your graphics set up. You cannot change GMode unless you reinstall *Bane of the Cosmic Forge*.

**Save Game Drive:** Wizardry is currently set to save your game in the current directory which is the default when Save Game Drive is left blank. However, you may select any drive and path you like to save your games to. Refer to your system's reference card inside this package for further information. Remember, your save game disks must be formatted ahead of time.

**Scenario Drive:** This option allows you to tell Wizardry where it should look for its information. You'll see two different boxes: the first is for your primary drive, the second is for your secondary drive. Since each system is different in its hardware setup, refer to your system's reference card inside this package for further information.

To move between the choices, use the [UP] and [DOWN] arrow keys. To change the current selection, use the [LEFT] and [RIGHT] arrow keys.. When you are finished, highlight "Exit" and press [RETURN].

Certain doors have been locked for one reason or another. In most cases, creatures have things they want to protect or places they don't want you to go. When you come across a locked door, you will see a message informing you of your sudden roadblock. But don't be disheartened. It's quite possible for your characters to open such doors. Remember, however, that some locks may require a special key.

### Open

The "Open" option puts your characters into action. Any character with a talent for picking locks (skulduggery) or the strength of a troll will find this option useful.

When you select "Open", you'll see two options, "Force" and "Pick". Once you select one or the other, there is no turning back - your tools are already in the lock or your character is hefting him- or herself against the door.

**Force:** The character moves back, grimaces, and then slams into the door. Without question, you're relying on your character's strength to bash the door in. On your screen, you'll see the strength of your character (top line), and the strength of the door (bottom line). When your character's strength exceeds that of the door, press [RETURN], and the door will open. Of course, the longer the character strains to open the door, the more stamina he or she uses. Eventually, if your character strains long enough, he or she will slump to the floor, entirely exhausted.



**Pick:** The thief pulls a bundle of tools from his backpack, and setting them beside the door, begins to work on the lock. The tumblers move inside, and you're waiting for just the right moment, the right combination to open the lock. Characters with a solid knowledge of skulduggery seem to have a knack for finding that combination. On your screen, you'll see the tumblers moving and shifting inside the lock. When they are in the right location, the tumblers will be green. When you see a clear line of green, the time is right. Press [RETURN].

If you successfully pick the lock or force the door down, it will open. If not, there's a chance that the lock may break during the attempt. If the door doesn't open, it may become jammed; you won't be able to pick its lock, and without the strength of Zeus, it will be hard to force it open.

### Knock-Knock

If you can't seem to force the a door down, or get the tumblers just right, there is still a chance that you can open the door. Just call on your magic user.

From the Party Options window, select the "Spell" option. Next, choose a character who has the *KNOCK-KNOCK* spell. Cast the spell (remember the power of the lock on the door when you're casting your spell), and hopefully, if the spell power is enough, all of the monsters' efforts to keep you out will have been in vain and the door will open.

*KNOCK-KNOCK* also works to open regularly jammed doors. When you cast *KNOCK-KNOCK*, you will see either "Success" or "Failure"; if it's the latter, try increasing the power level. However, if you see "Jammed", it means you've encountered a magically jammed door. You'll need a special item to open it.

Treasure chests contain the bounty that every adventurer lives for. Inside each, gold, jewelry, swords or shields . . . just about anything you can imagine . . . can be found. Traps are often placed on these chests so that their possessions won't be so easily taken.

Sometimes your party will happen upon a chest hidden in a nook within the dungeon. If this happens, select the "Open" option from the Party Options Menu. Next, you will see the Treasure Chest Options.

### Inspect

This option allows your characters to take a closer look at the chest to see if there is a trap present. Select a character to inspect the potential trap. Characters who are skilled in the art of skulduggery stand the best chance. You may want to have all of your characters inspect the chest just in case one character misses something. Be careful, however, the inexperienced may set off the trap when they inspect it.

In the right-hand window, you'll see the name of the trap, or at least what your inspector believes it to be. However, the letters in the name will be jumbled. Therefore, you will not clearly see a POISON NEEDLE when looking at the trap. Instead, EISOLP OENNDE will come to mind.

Sometimes, you may not be able to display all of the letters in a trap's name. It all depends on the inspecting character's skulduggery skill. Instead of EISOLP OENNDE, you might get nothing more than ISO ENDE. The higher the skulduggery skill, the better your chance of detecting all of the trap's letters.

Some letters in the jumble may be green and some may be red. Occasionally, you'll even see asterisks (\*) cover a letter or a space in between groups of letters.

Green letters are guaranteed to be letters in the name of the trap.

Red letters, on the other hand, are questionable.

A Space between groups of letters lets you know there is more than one word in the trap.

Asterisks (\*) mean that a letter previously picked by another character is not in the name of the trap. The character currently inspecting the trap is certain of it.

It's the job of you and your party to unscramble these letters to form the name of a trap. Once you've done so, you may want to disarm the chest.

### Disarm

If you think there is indeed a trap on a chest you've found, choose this option. Next, select a character to disarm the trap; characters who are skilled in skulduggery are your best bet.

On your screen, you'll see a list of traps typically found on chests within the Wizardry. Scroll through the list until you find the trap you're looking for and press [RETURN]. If you're right, and your character has the ability to disarm the trap, the chest will successfully open, and the bounty will fall into your hands. On the other hand, if your character bungled the disarming, or if the trap wasn't what you suspected it was, you may set the trap off. If it doesn't blow up, try disarming it again or simply leave the chest alone, though you won't get the loot.

### Open

If you suspect there is no trap on a chest, or if you're feeling really adventurous, you can just open it. Pull its lid back and grab for the gold. If there is a trap present, it will most certainly blow up. Therefore, you should always Inspect a chest for traps first.

### Spell

**DIVINE TRAP** allows you to magically determine the trap on a chest. Just select a character with this spell, choose **DIVINE TRAP** and the power level. Hopefully, if the spell is strong enough, the trap's identity will reveal itself. Jumbled, of course.

**KNOCK-KNOCK** also allows you to get to the goodies inside a chest, but a bit differently than Divine Trap. By magically alerting the chest's lock and neutralizing the trap inside, **KNOCK-KNOCK** attempts to open the chest directly. You don't even need to know what the trap's name is! However, there is a percent chance that **KNOCK-KNOCK** will fail in its attempt to open the chest, setting off the trap in the process.

### Leave

If the trap on the chest seems too tough for you, or if you are not interested in its bounty, use this option to leave the chest behind.



### Divvying Your Loot

After you have successfully opened the trap, each member of your party will receive a portion of its bounty. However, if there are special items inside, such as swords or other goodies, you will be able to choose who receives them. Be careful not to overload your character's carrying capacity. While that shiny plate mail might look great sitting there in the chest, your Faerie won't be too thrilled if you flatten her with it.

Using the [RIGHT] arrow key, move to the item list and select any item you're interested in. You will see the item's weight (so you don't overload any of your characters), and you will be asked to select a character to receive the item. If there is more than one item in a chest, simply repeat the process until you have taken all you want. Of course, if you want none of it, or only part of it, you may select "None" at any time. Be certain you've taken all you wanted, though. Once you select "None", the Divvy Loot will be terminated immediately, and all of the leftover bounty will be gone.

After you have your goodies, you can "Assay" each item to find out its particulars. There are some properties of an item which Assay does not reveal. Cast the *IDENTIFY* spell to get full picture.

**Caution:** Always have at least one item slot open in your party in case you find an essential item. Otherwise, you'll have to restart from a saved game. Unlike other games which allow your characters to blissfully walk away from items that are essential, Wizardry will force your party to accept an item. While good game players can generally recognize what's required of them, Wizardry's safety feature means you won't find yourself frustrated at the end of the game without something you desperately need.

You're not alone in this world. Well before your party wandered here, creatures of all kinds called this locale their home. You will find them waiting behind doors or see them lurking about dark recesses. As you may have anticipated, a meeting between a group of monsters and your party is frequently without milk and cookies. However, a combat situation comes with fun and challenge and plenty of it.

### Who's There?

Most of the time, you will only be told what the monsters look like, not what they really are. For example, you may encounter an "Unseen Entity" but you won't know whether it's a ghost or a flying bed sheet (or something worse for that matter). Characters who have studied mythology have the best chance of identifying the monsters' true identity.

### The Course of Action

Combat will proceed in rounds. Each round, both you and the monsters select a course of action, and then *Bane of the Cosmic Forge* acts as the mediator of the action. Combat is over when either side runs away or is totally defeated.

When you come upon a group of monsters bent on stopping your party dead in their tracks, each of your characters will have several options. These options are based on the character's class, skills, weapons and position in the party; so it's likely that each character's combat options will be slightly different than his or her fighting mates.



## Fight

The "Fight" option engages your characters in the fine art of physical contact. Their skills, weapons, statistics and muscle are called into play (not to mention a bit of sheer luck).

Depending on your characters' skills and weapons, you may be able to choose from one of several methods of fighting. The method you choose is called a fighting mode. (To see which modes your weapons use, Assay them while reviewing your characters.) Each mode has its own strengths and weaknesses, and relies heavily on the skill of the character wielding it. (See weaponry skills in the *Creating a Character* section of this manual).

The basic attack is a "swing", a side-to-side slicing blow. The chart on the next page compares the other available fighting modes to the swing in three areas:

**To Hit:** As compared to swing, the likelihood your character will hit a monster with his or her weapon. For example, if your character selected "Melee", he or she would essentially swing wildly in hopes of hitting something. Obviously the odds to hit are down when you're not really looking where your weapon is going. However, a "Swing", covering a wide arc with direction, has a good chance of hitting a monster.

**To Penetrate:** As compared to swing, the likelihood your character will penetrate the monster's armor after a successful hit has been made. For example, a direct "Thrust" into a monster's leather armor has a better chance of penetrating it than a glancing "Swing" has.

**Damage:** Once a blow has successfully hit the monster and penetrated its armor, the damage column compares the actual amount of physical damage inflicted upon the monster. For example, while the odds to hit a monster are down with a "Melee" type of attack . . . watch out if you connect! Melee does double damage.

Mode Selected	To Hit	To Penetrate	Damage Inflicted
Thrust _____	-2 _____	+1 _____	+1
Bash _____	Same _____	-2 _____	+2*
Melee _____	-4 _____	-4 _____	Double
Throw _____	-1 _____	+1 _____	Same
Punch _____	+1 _____	-1 _____	Same
Kick _____	-2 _____	Same _____	+2*
Lashing _____	+2 _____	-2 _____	Same
Shoot _____	Same _____	+2 _____	Same

\* Damage inflicted is also directly affected by the strength of the character.

For characters with the Kirijutsu skill, any fighting mode may deliver a critical kill. For Monks and Ninja fighting with their hands or feet, the Punch and Kick modes also have a chance of delivering a critical kill.

Once you have selected your character's fighting mode, you will need to choose a target. If there is only one group of monsters, the selection is automatically made for you. For multiple groups of monsters, however, you have a choice and must pick the target.

Certain weapons permit a character to hit monsters far away (long range) while other weapons require close contact (short range). *Bane of the Cosmic Forge* will only allow you to select a monster group within the range of your character's weapon.

**Short range weapons (S)** permit party members 1-3 to attack monster groups 1-2.

**Extended range weapons (E)** permit all members of the party to attack monster groups 1-2.

**Thrown weapons (T)** permit all party members to attack monster groups 1-3.

**Long range weapons (L)** permit all party members to attack all monster groups.

Remember, monsters have their own ranges as well. Typically, the first three characters in your group are hit most often. Keep the strong and fighting-type characters up front in the first three slots.

With all said and done, the character is ready for action. *Bane of the Cosmic Forge*, acting as a game master, calculates the character's performance (over one hundred calculations are completed), and reports damage your character has caused.

While in the fight mode, your character may attack the monster more than once, and may hit the monster several times within a single attack.

### Multiple Attacks

After attacking a monster with a primary weapon (the primary attack), a character with speed or experience, and skill in weaponry, will be allowed a secondary attack. In this case, your character would have two separate attacks in a round. Well-trained combatants can have up to 4 attacks in a single round of combat, two primary and two secondary. If your character has a two-handed weapon or is holding a shield, then he or she can have, at most, two primary attacks; there's no hand left to hold a secondary weapon. Without a secondary weapon equipped, the secondary attack is forfeited.

### Multiple Hits

Highly dexterous characters, or those that are experienced, may be able to swing more than once during the attack. When a character gets a multiple hit, you will hear the swing or movement of the weapon and see "Hit!" (or miss) in the message window along with the damage caused more than once during the attack.



## Parry

Parry allows your characters to take a defensive or passive role in combat. But remember, they are still quite involved. The characters may be hit, and under certain circumstances, they may hit back. On the other hand, they may take their chances, and rest for a round to replenish some lost stamina.

**Block:** Using the shield skill to protect against attacks. To select this option, the character must have a shield, and must be relatively proficient in shielding. A character who blocks cannot be hit for double damage.

**Dodge:** Being extremely watchful of all weapons, spells and missiles and, when the time comes, moving aside for them. While dodging, the character is harder to hit, and cannot be struck for double damage.

**Guard:** Waiting for the monsters to attack, and giving them a bit of their own medicine if they do. If a character is on guard, and a monster does attack, he or she will jump out, regardless of the position in the party, and attack the monster right back. "Guard" is useful for flying animals, such as bats, who can attack anyone, or for characters who cannot normally reach the monsters.

**Rest:** Catching your breath. A resting character will recoup some stamina, but his or her armor class will rise to 15 while they rest. This option is useful if there is little danger or if the character is about to pass out anyway. If your character passes out, it's for a while. Rest them before this happens, and they'll definitely have enough stamina to get through the next round.

## Equip

Smack dab in the middle of combat, you discover a terrible mistake. You accidentally equipped your prize warrior with a toothpick . . . and it's his primary weapon. Obviously, you'll need to do something to better the situation. Equip a better weapon, ready a massive missile attack. In cases such as this, select the "Equip" option. Just like the "Equip" option in a character's review, you can change equipment, drop equipment, Assay items or take something out of, or put something into, the Swag Bag. You may view your character's spells, but you may not cast them (use the "Spell" option instead). Of course, you can also use "Equip" to just review your character in general.

Juggling all of your equipment, especially under pressure, requires extra stamina, and leaves the character more prone to a monster attack.

## Spell

You're hoping to heal a character of a pesky poison, or perhaps you're determined to turn a ferocious giant into a pair of harmless bunny rabbit slippers. Whatever the case, if magic is what you need, then the Spell option should be your choice. When you select "Spell", you will see your character's complete spellbooks. Just choose the spell, its power level and, if necessary, a target.

Remember, some spells attack only one monster within a group while others attack an entire group or all of the monsters. Of course, you may also use this option to cast healing spells or other spells helpful to your party. For complete information on casting spells, and the spells available to the party, refer to the *Magical Spells* section of this manual.



## Use

Certain items within this world have the power to cast spells or bend the laws of nature in other ways. You may use these items in combat against your opponents or for the benefit of your party by selecting the "Use" option. Of course, a character who decides to use an item should have a good level of skill as well (such as Scribe for invoking scrolls or Artifacts for magical items). When you opt to use an item, a list of possessions will appear. Select the item you wish to use and press [RETURN]. As combat progresses, the item's magical power will unfold. If the item you selected has no power, then it will have no effect.

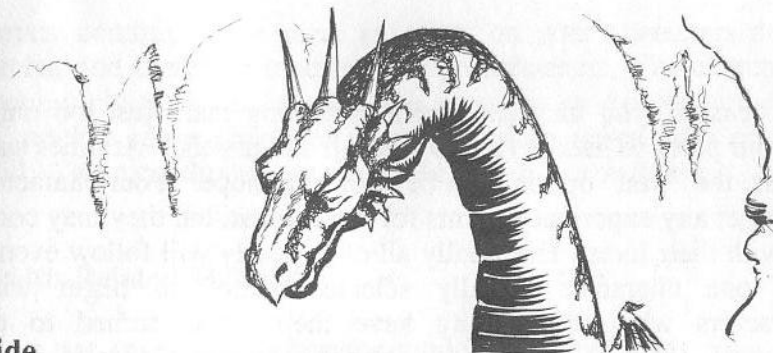
You can't use an item during combat if it's in your Swag Bag. Choose the "Equip" option, and take the item out of the Swag Bag first. Then, during the next round, you'll be able to use the item.

## Move

"Move" allows your characters to change their position within the party ranks. Occasionally, characters may become hurt or fall asleep, and because of their malady, they are unable to fight or protect themselves. Use the "Move" option to put a strong and healthy character in front of an injured one to protect him or her. Likewise, you may also move a strong character out of the back ranks to the front to deliver a deadly blow.

When a character moves, he or she may move to any position. If the character advances, all of the characters behind his or her new position will retreat one rank. On the other hand, if a character retreats, everyone moves ahead by one slot.

Moving requires extra stamina, and leaves the character prone to monster attack.



## Hide

Certain characters have the skill of concealment, Ninjutsu, down pat. These characters may attempt to hide from monsters during combat. If characters successfully hide, they can remain hidden or ambush the monsters. Since the monsters weren't expecting a single thing to happen, they are easier to hit, and if hit, they incur quite a bit of damage.

It's possible that your character can remain hidden even after he or she launches a surprise attack especially if they're able to kill an opponent before it screams to its companions. In cases like this the poor monster would get zapped, turn and still see nothing!



## Run

On occasion, you may encounter something that's just too tough for your party to handle (it's 80 feet tall and drools). At times such as this, the "Run" option may be your only hope. Your characters won't get any experience points for the combat, but they may come out with their lives. Eventually all of the party will follow even if only one character actually selected "Run" to begin with. Characters who are running have their backs turned to the monsters. Because of this, it's easier for the monsters to hit them, and if hit, the character will probably suffer extra damage.

There is a chance that the monsters will block the route of your characters. The party will have to continue combat or attempt a getaway again. Additionally, even if your party successfully escapes, there is a chance that in their haste to get away, they may crash smack-dab into another group of monsters.

## Breathe

Dracons, because of their genetic balance, are able to breathe acid upon their opponents. Selecting this option invokes the Dracon's inborn ability. Breath attacks require a lot of stamina, so be careful not to exhaust your character.

## Cancel and Backup

If you're having second thoughts about your selections, the "Cancel" option allows you to start all over again beginning with the first character. "Backup", on the other hand, just takes you back to the previous character's selection.

Certain conditions can have an effect on your characters during combat and therefore modify their performance. For example, a sleeping character can't attack the monsters or defend himself at all, neither can a character who is carrying seven suits of plate mail. These conditions are generally known as modifiers.

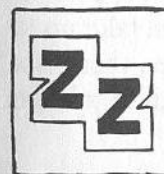
## Health-Related Maladies

There are several maladies (or modifiers) which can strike your character at any time. In general, these illnesses have three affects: the character will not perform as well, the character will be easier to hit, and more damage will be done if the character's armor is penetrated. However, some illnesses have their own special side-effects.

Should you see one of these symbols in your character's icon, you know the character has been affected. For the most part, however, a good rest or a magical spell can cure their ailments.

(None)

**Afraid:** Afraid characters will quake with fear at the sight of monsters, making such characters less capable and confident. Afraid characters may even try to run away! If a character is scared enough, a tiny field mouse will begin to resemble a huge, fire-breathing dragon with grimacing teeth.



**Asleep:** Sleeping characters are incredibly easy to hit because they are unable to avoid being struck. If hit, a sleeping character will take up to double damage, but will wake up immediately. Of course, a sleeping character cannot participate in combat.





**Blindness:** A blind character can't see what's going on and is more susceptible to a hit because of this. Further, it's not likely he or she will hit a monster without a lot of luck.



**Dead:** A dead character is exactly that - dead. He or she must be resurrected by magical means. When a character dies, he or she loses a point of vitality.



**Insanity:** An insane character is, at least for the time being, absolutely nuts. For magical reasons, his or her brain has been scrambled like an egg missing its side order of bacon. You'll have no control, whatsoever, over the character.



**Irritation:** Like that scratch you can never seem to reach, your characters will become preoccupied trying to quell an irritating itch. As a result, they won't fight as well.



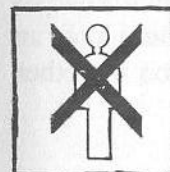
**Nausea:** There is a chance that a nauseated character may choke and gag and be helpless for the remainder of the round. Should this happen, the character will be an exceptionally easy target.



**Paralyzed:** Since the character can't move, even to fight, he or she is very easy to hit and can take up to double damage from an attack. However, there is a small chance the hit might just be enough to jolt the character's system back into action.



**Poisoned:** As the poison seeps through the character's bloodstream, he or she becomes sicker and sicker. Eventually, without an antidote or some rest, the character will die. Sometimes poison is so potent, resting will not cure it quickly enough; the character will die first, thereby making the antidote absolutely necessary.



**Stoned:** Since your character is officially a statue, he or she can't do anything but stand there and collect bird droppings. Stoned characters are easy to hit, but it's difficult to penetrate their stone. Stoning might be worse than death. Stoned characters lose a point of vitality, and when cured of the stoning, they may be dead. When you resurrect the dead character, he or she loses yet another point of vitality.

### Magical Modifiers

Some characters are naturally resistant to certain types of spells. When hit by such a spell, the character may fully resist its effects or may take less damage than the rest of the party. Check *Appendix A: Character Races* for complete information on a race's magical resistance.



### Statistical Bonuses

Depending on a character's statistics, he or she may excel in certain areas when compared to his or her opponent.

For example, suppose your intelligent Monk is battling a dumb 'ole rat. The Monk, because of its high intelligence, may be able to outwit the rat in its every move. Likewise, characters who are faster or stronger than their opponents may be able to out-move or overpower them. As in Monk's case, your character would have an intelligence advantage, thus the upper hand. The rat, on the other hand, would have an intelligence penalty.

Depending on your character's strength, intelligence, dexterity and speed as compared to that of the monster you're battling, you may have improved odds, or a penalty which somewhat hinders your character's success.

### Encumbrance

It takes strength and stamina to hold up a 20 pound sword. Add to that 200 pounds of plate mail, and it'll be a feat if the character moves at all. Encumbrance is what your character faces if he or she carries too much. By reviewing your character, you can see his or her total carrying capacity along with the weight he or she currently holds.

Encumbrance affects a character's ability to hit a monster and a character's armor class in the following ways:

Percentage of Carrying Capacity	Chance To Hit	Increase in Natural AC*
50% to 66%	- 5%	None
67% to 75% (lt. blue)	- 10%	+ 1
76% to 90% (yellow)	- 20%	+ 2
91% and up (red)	- 25% to - 40%	+ 4

\* Shown in parentheses by the character's armor class. "Review" the character to see its affect.

### Surprise Attacks

Your party walks into a room, and over to the side you notice a bunch of rats. Luckily, they don't see you. Now you have a chance to knock their socks off (or whatever rats wear) before they even know what hit them. Occasionally, you will surprise a group of monsters just like this. When you do, the first round of combat is all yours. And since the monsters weren't expecting a sword to smash into the middle of their cheese party, they will be much easier to hit. Of course, monsters can surprise your party, too.

### Life Insurance

Just as a precaution, before you go waltzing into a potentially loaded monster lair, save your game often. After you have defeated a group of monsters, you may want to save it again. In this way, should something happen to your fab six, you can resume play with your party alive, happy and healthy from your save disk.

After a few healthy encounters with monsters, your characters have gained some experience points. When a character gets enough experience points, he or she gains an experience level.

Gaining a level is a joyous occasion. On the screen, you will see your character's window and an announcement that he or she has gained a level. Following this, you will automatically get all the news about changes in your character:

1. The statistics may increase (they can decrease too).
2. They may gain hit points and stamina.
3. Their Rank within their profession may change.
4. They may get a skill bonus to apply in areas of choice (Weaponry, Physical and Academia). Remember to add points to your magic users' area of proficiency: Alchemy, Theology, Theosophy and Thaumaturgy. Otherwise, they may never learn any new spells.
5. They may learn new magical spells and gain additional magic points.

In some cases, you may have survived such an amazing encounter that your character will gain more than one level at a time. After it's all over, you will return to normal play. You may want to save the game after your character gains a level . . . just in case.

Not all creatures within *Bane of the Cosmic Forge* attack your party. In fact, certain creatures can be very friendly with the party. These creatures are called Non-Player Characters (NPC). NPCs are just like your Player Characters. They have their own lives, thoughts, statistics, items, etc. They also have great memories: "Ah, I remember you," he says as he looks over your brood. "Didn't you steal 100 gold pieces from me last time you were here?" Wizardry (acting as a game or dungeon master) controls the NPCs' movements, just as you make decisions for your own characters.

Each NPC relates to your characters individually and as a group. While some of your characters may meet with his approval, others, because of their personality or a mismatched karma, may not. If an NPC seems less than friendly toward one of your characters, try approaching him or her with another.

When you meet an NPC, your party has several options available to them.

### Talk

NPCs are typically talkative individuals. Most of them have lived in the world for years, and are knowledgeable about its lore, its creatures and its mysteries. Although they may not necessarily babble off all of their knowledge, they are willing to share most of it provided you know what to ask. Here are some suggestions:

- \* Who are you?
- \* Have you heard any good rumors lately?
- \* Ask them about topics they mention or seem to be knowledgeable about.
- \* Use proper English: noun, verb and subject, etc.
- \* If it's a question you're asking, end the sentence with a question mark.



Unlike other role-playing games, Wizardry can understand, and works best with, complete English sentences, not just half-grunted word fragments.

When you select the Talk option, you will be asked to pick a character to talk with the NPC. Entering the conversation, you'll see your character's name. Type in anything you want. "Hello" is a good start. When you've finished the conversation, simply type "Goodbye" or "Bye".

### Trade

Everyone needs to make a bit of money, and NPCs are no exception. Often, you will find an NPC holding some sort of mini garage sale. You may buy items he or she has collected or sell items you no longer have a need for. If you're feeling particularly generous, you can give an item or gold to the NPC. Such heartfelt gifts to an NPC often improve your character's relationship with the creature; the NPC will think of you more highly the next time you're around.

When you select the Trade option, Wizardry will ask you to choose a character to do the bartering. You and your character will now have four options:

**Buy:** When you opt to buy, you will see a list of the NPC's available items. Each item along with its general characteristics and price will be shown. Using the arrow keys, scroll through the list and then select something you just can't resist. If you have enough gold, the deal is complete. On the other hand, if you're short on cash, you may want to use the "Pool" gold option to get the money you need. Occasionally, an NPC won't sell your character an item.

For example, if the NPC doesn't like the character doing the dealing, he may simply refuse to part with any of his goods. Further, NPCs won't sell a character an item he or she can't use. This way you won't waste your gold or load your characters down with useless items. Sometimes you may be forced to steal an item you'd like to buy: the only character who can buy the item happens to be the one the NPC can't stand.

**Sell:** If you're a bit short on gold, or perhaps you've found a suit of plate mail that just doesn't fit any of your characters, try selling it to an NPC. When you select the "Sell" option, you'll be asked which item you wish to sell. Select the item using the arrow keys, and press [RETURN]. If the NPC is interested, a price will be quoted. Sounds good? Then accept the offer. Of course, you can politely decline as well.

Like your characters, each NPC has a certain amount of gold to part with, and he or she may not be able to afford all of the items you're offering. Additionally, some NPCs may decline to buy your items simply because they don't care for the character doing the dealing.

**Give:** When you're feeling generous or sorry for an NPC, you may be compelled to give it something. On the other hand, if you're facing an NPC who thinks your party is dungeon slime, you may be able to convince it to look at your group favorably by giving it a few hard-earned gold pieces or a new, shiny shield. Remember, however, an NPC will usually keep the object you give, so be careful not to part with your super-charged, laser action sword by accident.

**Exit:** To end the bartering session, choose "Exit" to return to the main NPC Options menu.



## Spell

Some spells, such as *CHARM* and *MINDREAD*, can be particularly useful when you encounter an NPC. For example, a good magic user can read what's on an NPC's mind; another spell allows you to make the NPC think it likes you when it would normally, without such magical influence, attempt to squash your party to bits.

To cast a spell, select "Spell", a character to cast the spell followed by the spell and its power level. For more information on the spells available to you, see the *Magical Spells* section of this manual.

## Use

Sometimes you may wish to use a scroll, a potion or a particular item while conversing with an NPC. To do so, select this option. Wizardry will then ask you to select a character followed by the item he or she wishes to use. You may use items directly out of your character's swag bag.

## Pool

When you're looking to purchase an expensive item or you are attempting to bribe an NPC beyond all belief, the "Pool" option can be used to transfer all of the party's gold to one character. Select "Pool", and designate a character to receive the party's gold. The rest of the party will reluctantly empty their purses, dumping it all into the lucky recipient's hands.

## Steal

So you can't afford that sword? "No problem," says the character skilled in Legerdemain, the art of the pickpocket.

After you select "Steal", choose a character to do the pilfering. Delicate steps are taken, and the character attempts to relieve the NPC of some gold, or if you're lucky, you might get that sword you wanted. Of course, you may not get away with it. In this case, the NPC will no doubt think less of your group.

## Fight

You've tried talking to it. Tried giving it money. Goodness, you even handed over your best piece of armor. For what? Nothing. "Let's rough him up a bit," your characters suggest. For whatever reason, you decide to select the "Fight" option. As with regular encounters, the combat options will appear. These were discussed earlier in the *Combat* section of this manual. Remember, if you kill an NPC, he or she will be gone forever, along with any clues he or she may not have given you.

## Leave

Unless you defeated the NPC in combat, select "Leave" to end your meeting. The NPC will go back to its business, and your party is free to travel on.

The divine art of spell casting is one of the most time honored in Wizardry. In some cases, the right spell can mean the difference between life and death. Within *Bane of the Cosmic Forge*, your characters can learn many spells.

### Realms

There is a total of 77 spells which are divided into six different realms: Fire, Water, Air, Earth, Mental and Magic. Each of these realms gets its power from the "element", such as fire or water, over which it presides. Within the Water realm, for example, you will find a spell to increase a character's stamina (replenishing water to the body), and yet another which freezes water and hurls it in a gust at your opponents. The Magic realm, while not influencing a tangible element, such as the Earth, relies on a divine and mystical power.

### Spellbooks

The four different spell-casting types in Wizardry - Alchemist, Mage, Priest and Psionic - learn their own selection of spells from these six realms. These four groupings are referred to as spellbooks. Sometimes you'll find a spell in more than one spellbook. *KNOCK-KNOCK*, for example, can be cast by both the Mage and the Psionic. Following the complete spell listing, you'll find a section for each spellbook.

### Spell Levels

Each realm is broken down into seven spell levels (level 1 Earth spells, the level 2 Earth spells and so on). Your spell casters typically learn one level at a time, but may occasionally learn a level 2 spell before learning all of level 1. In each magic users' spellbook, you can see what the level of each spell is.

### Power Levels

Each spell has six different power levels. The higher the power level, the more powerful the spell. For damage-oriented and healing spells, the power level will affect the amount of damage or healing done. For other spells, such as *KNOCK-KNOCK* or *DIRECTION*, the power level of the spell will increase its effectiveness or duration.

### Costs

For each spell your character learns, he or she will be given a certain amount of spell points. These points, in turn, are used to cast the spells. When your magic user casts a spell, Wizardry first checks to see if he or she has enough spell points available. If so, Wizardry will cast the spell for you. Regardless of the spell, Wizardry will always tell you how much each power level "Costs".

As a spell increases in power levels, it also increases in cost. For example, if a spell cost 5 points for power level 1, then it would cost 10 points for power level 2 and so on.

### Affects and Effects

Some spells attack only one monster or help only one character. Others can encompass all opponents or affect the entire party. In the list of spells which follows, the affected person or group(s) are listed.

Sometimes monsters may dodge some or all of the effects of a spell. If the spell is a damage spell, the damage might be cut in half or quartered. If it's an "all-or-nothing" type spell, there may be no effect at all. Lastly, just like your characters, some monsters are resistant to certain types of spells. For example, a monster composed of ice likely wouldn't be hurt by an *ICEBALL* spell.

## Oratory

One of the most important skills of the spell caster, Oratory is the practice of successfully enchanting a spell. A character proficient in oratory can easily zip off a deadly spell.

However, characters with poor oratory or bad luck may backfire or fumble a spell. When a spell backfires, it attacks the party instead of the monsters! So, if you cast a Magic Missile and fumble its incantation . . . b o o m. Your characters will be affected just as if the monsters had cast it on you.

## Summoning Spells

Some spells allow you to summon a monster from another plane to fight for your party. When this happens, you will see the monsters' name along with their number above your party's information. As long as the planes have not been recently opened, the summoning spells will usually work. However, once you have summoned one group of monsters, you may not summon another group until the first group dies or the encounter is ended.

Sometimes an attack originally meant for your characters will strike the summoned group of monsters . . . saving you the pain, rest and the healing spells necessary to recover.

## Casting a Spell

There are six steps to casting a spell. As you complete each part, you'll see the cursor blinking at you to indicate the next course of action.

1. Select the "Spell" option.
2. Select a character to cast the spell.
3. Choose the realm which contains the spell you want to cast (use the arrow keys).
4. Select the spell.
5. Choose the power level.
6. Give the spell a target (a character, a monster group, an item, a door, etc.).

## To learn more spells . . .

Your spell casters must study to learn more spells. When your spell casters gain a level, be sure to add skill points to their area of proficiency. Some classes, such as the Samurai, are both warriors and spell casters. Be careful not to neglect their fighting skills in lieu of spell power.



## Fire Spells

Spell Name	Spellbook	Base	Affects	Description
	Cast When	Cost		
<b>ENERGY BLAST</b>	2	1 Monster		A jolting spark of electric energy doing 1-7 hit points of damage per power level.
Mage Combat				
<b>BLINDING FLASH</b>	3	1 Monster		A giant flash of light which may temporarily blind opponents.
Alchemist Combat		per power level		
<b>FIREBALL</b>	6	3 Monsters		Blazing fireballs which burn opponents and can do 2-10 hit points of fire damage per power level.
Mage Combat		plus power level		
<b>FIRE SHIELD</b>	8	Party		Creates a barrier impervious to fire which protects the party from fire-type spells.
Mage Combat				
<b>FIRE BOMB</b>	8	4 Monsters		An exploding, incendiary spell which does 3-9 hit points of fire damage per power level.
Alchemist Combat		plus power level		
<b>LIGHTNING</b>	8	3 Monsters		A bolt of electrical energy hurled at the opponents doing 1-10 hit points of electric damage per power level.
Priest Combat		plus power level		

## Fire Spells

Spell Name	Spellbook	Base	Affects	Description
	Cast When	Cost		
<b>PRISMIC MISSILE</b>	9	3 Monsters		Also known as <b>DANCING LIGHT</b> and <b>RAINBOW RAYS</b> , the various spectrums have different random effects upon the monsters.
Mage Combat		plus power level		
<b>FIRESTORM</b>	12	Cloud		A sweeping cloud of fire that lasts for several rounds of combat and burns all monsters within it. Monsters affected, duration and damage done all depend on the power level of spell.
Mage Combat				
<b>NUCLEAR BLAST</b>	16	All Monsters		A miniature fusion bomb. This spell burns all monsters and does 5-25 hit points of fire damage per power level.
Mage Combat				

Spell Name Spellbook Cast When	Base Cost	Affects	Description
<b>CHILLING TOUCH</b> Mage Combat	2	1 Monster	A freezing blast of cold which does 1-6 hit points of cold damage per power level.
<b>STAMINA</b> Priest, Psionic Alchemist Anytime	2	1 Character	Replenishes some of the character's stamina. Amount depends on the power level.
<b>TERROR</b> Mage, Psionic Combat	3	1 Group	Evokes fear and terror in monsters and may cause them to flee or otherwise reduce their ability to fight against the party.
<b>WEAKEN</b> Mage, Psionic Combat	4	3 Monsters plus power level	Physically drains the monsters making them more vulnerable to attack, and causing them to fight and react poorly.
<b>SLOW</b> Priest, Psionic Combat	4	3 Monsters plus power level	Slows monsters down. They can't move as fast to hit you, and are easier to hit themselves.
<b>HASTE</b> Priest, Psionic Combat	5	Party	Speeds up characters' movements by giving them extra energy. Also helpful to counteract a SLOW spell.

Spell Name Spellbook Cast When	Base Cost	Affects	Description
<b>CURE PARALYSIS</b> Priest, Psionic Alchemist Anytime	6	1 Character	Attempts to cure one character of paralysis. Success depends on strength of paralysis relative to the strength of the spell.
<b>ICE SHIELD</b> Mage Combat	8	Party	A barricade which resists the effects of cold and protects the party from cold and cold-type spells. Strength and duration relative to the power level of the spell.
<b>ICEBALL</b> Mage Combat	8	4 Monsters plus power level	A flurry of stinging ice balls which cause 3-12 hit points of ice damage per power level.
<b>PARALYZE</b> Priest, Psionic Combat	5	1 Monster	Attempts to solidify a monster. Duration and success depend on the power level of spell.
<b>DEEP FREEZE</b> Mage Combat	6	1 Monster	Attempts to freeze a monster's bodily fluids solid doing 3-30 hit points of severe ice damage per power level.

Spell Name	Spellbook	Base	Affects	Description
Cast When	Cost			
<b>POISON</b> Alchemist Combat	2	1 Monster		Turns the air poisonous around the monster, and causes 1-5 hit points damage per power level plus poisoning. Strength of poison relative to the power level of the spell.
<b>MISSILE SHIELD</b> Mage Combat	5	Party		Protects party from missiles, arrows and hurled weapons, etc., by hardening the air around the party into a shield.
<b>STINK BOMB</b> Mage, Alchemist Combat	4	3 Monsters		A odorous cloud of stinking fumes that can do 1-6 hit points damage per power level plus nausea.
<b>AIR POCKET</b> Mage, Alchemist Combat	8	Party		Protects party from air spells such as stinking clouds and suffocation by creating a pocket of clean air around the party. Strength and duration relative to the power level of the spell.

Spell Name	Spellbook	Base	Affects	Description
Cast When	Cost			
<b>SILENCE</b> Priest, Psionic Combat	4	3 Monsters plus power level		Causes air around monsters to stop transmitting sound, thus preventing them from casting spells. Strength and duration relative to power level.
<b>POISON GAS</b> Alchemist Combat	7	Cloud		Poison cloud which lasts several rounds and surrounds the monsters. Monsters inside the cloud suffer from poisoning and damage. The monsters affected, duration and damage done all depend on the power level of the spell.
<b>CURE POISON</b> Priest, Alchemist Anytime	8	1 Character		Attempts to cure one character of poisoning. Success depends on strength of poison relative to the strength of the spell.
<b>WHIRLWIND</b> Priest Combat	8	3 Monsters plus power level		A swirling tornado whipping around the monsters and blasting them with 1-7 hit points damage per power level.



Spell Name	Spellbook	Base Cost	Affects	Description
<b>PURIFY AIR</b>	Priest, Alchemist Combat	10	Party	Attempts to clean the air of any dangerous clouds such as <b>FIRESTORM</b> and <b>POISON GAS</b> . Success depends on the strength and amount of clouds relative to the strength of the spell.
<b>DEADLY POISON</b>	Alchemist Combat	8	1 Monster	Kills monster outright or does extremely heavy poisoning plus 3-15 damage per power level.
<b>LEVITATE</b>	Mage Anytime	12	Party	Holds party in air several inches above the floor helping to prevent damage in case they fall. Duration of the spell is relative to the power level of the spell.
<b>TOXIC VAPORS</b>	Alchemist Combat	8	Cloud	A giant, sticking cloud of vapors which surrounds the monsters and causes 2-6 hit points damage per power level. Monsters affected depends on the power level of the spell.

Spell Name	Spellbook	Base Cost	Affects	Description
<b>NOXIOUS FUMES</b>	Mage, Alchemist Combat	10	3 Monsters plus power level	Horrid smelling torrents which blast the monsters' noses and cause 1-6 hit points damage per power level plus nausea.
<b>ASPHYXIATION</b>	Mage, Alchemist Combat	12	1 Group	Swallows air around monsters leaving none to breathe. Chance of monsters' death depends on their strength and susceptibility relative to the strength of the spell. Creatures or things that don't breathe, like rocks, can't be asphyxiated.
<b>DEADLY AIR</b>	Alchemist Combat	16	All Monsters	Makes air surrounding the monsters entirely unbreathable and causes 4-16 hit points damage per power level.

Spell Name Spellbook Cast When	Base Cost	Affects	Description
<b>ACID SPLASH</b> Alchemist Combat	2	1 Monster	A rushing wave of bubbling acid which causes 1-7 hit points of damage per power level.
<b>ITCHING SKIN</b> Alchemist Combat	2	3 Monsters	A sprinkle of powder which causes the monsters' skin to itch. It also irritates the monsters and lessens their ability to attack and defend.
<b>ARMOR SHIELD</b> Mage Combat	2	1 Character	Creates a magical shield in front of the party, and lowers AC of party members by one point per power level.
<b>DIRECTION</b> Mage Anytime	3	Party	Shows direction party is facing (N,S,E,W) in the dungeon. The duration of spell is relative to its power level.
<b>KNOCK-KNOCK</b> Mage, Psionic At A Door or Treasure Chest	6	Locked Doors and Treasure Chests	Magically alters the lock on a door (jammed or not) or a chest in an attempt to unlock it. When used on a chest, there is a percent chance that it may set the trap off.

Spell Name Spellbook Cast When	Base Cost	Affects	Description
<b>BLADES</b> Priest, Psionic Combat	6	3 Monsters plus power level	Hurls slicing razor blades through the air doing 2-8 hit points damage per power level.
<b>ARMORPLATE</b> Priest Anytime	6	Party	Creates a magic armor plating around the party, protecting them and lowering their armor class.
<b>WEB</b> Mage, Alchemist Combat	7	1 Monster	Attempts to capture 1 monster in a sticky web. Success depends on the strength of the monster relative to the power level of the spell.
<b>ACID BOMB</b> Alchemist Combat	8	Cloud	A giant acid cloud that surrounds monsters and causes acid damage. The monsters affected, duration and damage done all depend on the power level of the spell.
<b>ARMORMELT</b> Mage, Psionic Combat	8	1 Group	Softens the armor of monsters and raises their AC in proportion to the power level of the spell. The softened armor and hide are easier to penetrate.

Spell Name	Spellbook	Base Cost	Affects	Description
	Cast When			
<b>CREATE LIFE</b>	10	Party		Summons a group of organic monsters to come and fight for the party. The power and number of monsters summoned is relative to the power level of the spell.
Alchemist				
Combat				
<b>CURE STONE</b>	18	1 Character		Attempts to restore a stoned character to normal flesh and bone. Success depends on the strength of the stone relative to the power level of the spell.
Priest, Alchemist				
Anytime				

Spell Name	Spellbook	Base Cost	Affects	Description
	Cast When			
<b>MENTAL ATTACK</b>	3	1 Monster		An invading pressure of thought swirling the monster's brain and causing 1-7 hit points of mental damage per power level. May cause insanity.
Psionic				
Combat				
<b>SLEEP</b>	3	3 Monsters plus power level		Causes monsters to fall asleep and prevents them from attacking the party members and defending themselves from attack. Success depends on the power of the monsters relative to the power level of the spell.
Mage, Psionic				
Alchemist				
Combat				
<b>BLESS</b>	4	Party		Magically lowers the party's AC and enhances their chance to hit a monster relative to the power level of the spell.
Priest, Psionic				
Combat				



Spell Name	Spellbook	Base Cost	Affects	Description
Cast When				
<b>CHARM</b>		<b>5</b>	<b>1 Monster or NPC</b>	Attempts to charm a monster, thus preventing it from attacking the party. Any monster charmed will likewise be easier to hit. When cast in non-combat situations, the spell attempts to charm the NPC so that it will regard the party in a friendly manner. The higher the power level, the stronger the charm.
Priest, Psionic Alchemist Combat/NPC				
<b>CURE LESSER CND</b>		<b>4</b>	<b>1 Character</b>	Attempts to cure a character of one of the lesser maladies: Afraid, Asleep, Blindness, Nausea, and minor Irritations. Success depends on the strength of the malady relative to the strength of the spell.
Priest, Psionic Alchemist Anytime				
<b>DIVINE TRAP</b>		<b>4</b>	<b>Caster</b>	Permits the caster to determine the letters of a trap on a chest with excellent reliability. Success depends on the power of the trap relative to the power of the spell.
Priest, Psionic At a Treasure Chest				

Spell Name	Spellbook	Base Cost	Affects	Description
Cast When				
<b>DETECT SECRET</b>		<b>5</b>	<b>Caster</b>	Opens the caster's mind to anything which may be strange or out of place in a area and allows him or her to detect its presence within the party's immediate area. The <b>DETECT SECRET</b> eye in the magical windows will "blink" when this has happened. Duration and success of the spell is relative to the spell's power level.
Mage, Psionic Anytime				
<b>IDENTIFY</b>		<b>8</b>	<b>1 Monster or an Item</b>	Attempts to reveal the true name of a monster or an item. Success depends on the power of the monster or the cloak of the item relative to the power level of the spell.
Priest, Psionic Combat/Anytime				
<b>HOLD MONSTERS</b>		<b>6</b>	<b>3 Monsters plus power level</b>	Attempts to confuse the monsters into believing they are paralyzed. If successful, monsters will be temporarily paralyzed. Success depends on power of the monster relative to the power level of the spell.
Priest, Psionic Combat				

Spell Name	Spellbook	Base	Affects	Description
Cast When	Cost			
<b>MINDREAD</b>	8	Caster		Attempts to discern what's on an NPC's mind. Success depends on the power of the NPC relative to the power level of the spell.
Psionic NPC				
<b>SANE MIND</b>	10	1 Character		Attempts to restore sanity to an insane character. Success depends on just how nuts the character is relative to the strength of the spell.
Priest, Psionic Anytime				
<b>PSIONIC BLAST</b>	8	3 Monsters plus power level		An extreme and powerful jolt of mental energy which scrambles the monsters' brains and causes 1-7 hit points mental damage per power level and may cause insanity.
Psionic Combat				
<b>ILLUSION</b>	10	Party		Attempts to conjure an illusion of a creature so real that it can fight and attack the monsters, and in turn, it can be attacked by the monsters. The amount and power of monsters in the illusion depends on the power level of the spell.
Psionic Combat				

Spell Name	Spellbook	Base	Affects	Description
Cast When	Cost			
<b>WIZARD'S EYE</b>	10	Caster		Allows the caster to see the surrounding area from an overhead view. The size of the area seen depends on the power level of the spell.
Mage, Psionic Exploring				#1: Just the floor. #2: Obstructions with a 3 square radius. #3: Full view with a 3 square radius. #4: Floor only with a 5 square radius. #5: Obstructions with a 5 square radius. #6: Full view with a 5 square radius.
<b>DEATH</b>	10	1 Monster		Attempts to kill a single monster outright. Success depends on the power of the monster relative to the power level of the spell.
Priest, Psionic Combat				

Spell Name	Spellbook	Base	Affects	Description
	Cast When	Cost		
<b>LOCATE OBJECT</b>		<b>8</b>	Caster	Allows the caster to magically determine the whereabouts of a certain object. Success depends on the location of the item relative to the party, how well the item is hidden and the power level of the spell.
	Priest, Psionic Exploring			
<b>MIND FLAY</b>		<b>18</b>	All Monsters	A concentrated tide of mental assault which devastates the monsters doing 4-16 hit points damage per power level plus potential insanity.
	Psionic Combat			

Spell Name	Spellbook	Base	Affects	Description
	Cast When	Cost		
<b>HEAL WOUNDS</b>		<b>4</b>	1 Character	Heals 1-8 hit points per power level. Heal wounds will not cure lesser conditions or resurrect dead characters.
	Priest, Psionic Alchemist Anytime			
<b>MAKE WOUNDS</b>		<b>3</b>	1 Monster	Invokes divine powers to cause bodily harm inflicting 1-8 hit points of damage per power level.
	Priest Combat			
<b>MAGIC MISSILE</b>		<b>4</b>	1 Monster plus power level	Small, but powerful, missiles of magical energy hurled at an opponent doing 1-7 hit points of magic damage per power level.
	Mage Combat			
<b>DISPELL UNDEAD</b>		<b>7</b>	1 Monster per power level	Attempts to dispell an animated and undead monster. The success depends on the power of the monster relative to the power level of the spell.
	Priest Combat			



Spell Name	Spellbook	Base	Affects	Description
	Cast When	Cost		
<b>ENCHANTED BLADE</b>	<b>4</b>	<b>Party</b>		
Priest				
Anytime				Magically enhances the characters' swords and increases the likelihood of a successful hit upon a monster. Also increases the chance a hit will penetrate the monster's armor. The duration and power of the effects are relative to the power level of the spell.
<b>BLINK</b>	<b>7</b>	<b>Caster</b>		
Mage, Psionic				
Combat				Allows the caster to disappear for a brief time during combat. Once Blink is cast, the caster "blinks out" and will "blink in" sometime during each round of combat. He will always reappear in time to execute his or her normal combat option such as swinging a sword or casting a spell. The duration is relative to the power level of the spell.

Spell Name	Spellbook	Base	Affects	Description
	Cast When	Cost		
<b>MAGIC SCREEN</b>	<b>8</b>	<b>Party</b>		
Mage				
Anytime				Creates a magical barrier which attempts to protect the party from all spells cast at them. The strength of the barrier is relative to the power of the monsters' spells and the power level of the Magic Screen.
<b>CONJURATION</b>	<b>10</b>	<b>Party</b>		
Mage, Priest				
Combat				Summons monsters from the ethereal planes to fight for the party. The power and number of monsters summoned is relative to the power level of the spell.
<b>ANTI-MAGIC</b>	<b>7</b>	<b>Monsters</b>		
Mage				
Combat				Forms a magical barrier around the monsters which may cause their spells to fizzle out and/or backfire. The strength of the barrier is relative to the power level of the spells the monsters cast and the power level of the Anti-Magic screen.

Spell Name	Spellbook	Base	Affects	Description
	Cast When	Cost		
<b>REMOVE CURSE</b>	Priest Anytime	10	Item	Attempts to lift a magical curse from an item so that a character can remove the item he or she had been forced to wear. Success depends on the strength of the curse relative to the strength of the spell.
<b>LIFESTEAL</b>	Priest, Psionic Combat	12	1 Monster and Caster	Removes virtually all lifeforce from a monster and attempts to channel some of it back into the caster to heal him or her. Does 4-16 hit points magic damage per power level - multiplied by the power level of the spell. At the sixth power level, <b>LIFESTEAL</b> can deliver 144-576 hit points damage.
<b>ASTRAL GATE</b>	Mage, Priest Combat	8	1 Monster per power level	Attempts to banish a demon-type monster from this world. Success depends on the power of the monster relative to the power of the spell.

Spell Name	Spellbook	Base	Affects	Description
	Cast When	Cost		
<b>WORD OF DEATH</b>	Priest Combat	18	All Monsters	A divine word spoken so powerfully that it smashes the monsters with 4-16 hit points of magical damage per power level.
<b>RESURRECTION</b>	Mage, Priest, Psionic Anytime	20	1 Character	Attempts to raise one character from the Dead. Success depends on the character's life force (vitality) relative to the power level of the spell. Each time a character is raised from the dead, he or she loses one point of vitality.
<b>DEATH WISH</b>	Priest Combat	20	All Monsters	Attempts to kill all monsters outright through sheer magical force. Success depends on the power of the monsters relative to the power level of the spell.

*Alchemists' Spellbook*

Spell	Realm	Level	Cost
Blinding Flash	Fire	2	3
Fire Bomb	Fire	4	8
Stamina	Water	1	2
Cure Paralysis	Water	3	6
Poison	Air	1	2
Stink Bomb	Air	3	4
Air Pocket	Air	3	8
Poison Gas	Air	4	7
Cure Poison	Air	4	8
Deadly Poison	Air	5	8
Purify Air	Air	5	10
Toxic Vapors	Air	6	8
Noxious Fumes	Air	6	10
Asphyxiation	Air	6	12
Deadly Air	Air	7	16
Acid Splash	Earth	1	2
Itching Skin	Earth	1	2
Web	Earth	3	7
Acid Bomb	Earth	4	8
Create Life	Earth	5	10
Cure Stone	Earth	6	18
Sleep	Mental	1	3
Charm	Mental	1	5
Cure Lessor Cnd	Mental	2	4
Heal Wounds	Magic	1	4

*Mages' Spellbook*

Spell	Realm	Level	Cost
Energy Blast	Fire	1	2
Fireball	Fire	3	6
Fire Shield	Fire	3	8
Prismic Missile	Fire	5	9
Firestorm	Fire	6	12
Nuclear Blast	Fire	7	16
Chilling Touch	Water	1	2
Terror	Water	1	3
Weaken	Water	2	4
Ice Shield	Water	3	8
Iceball	Water	4	8
Deep Freeze	Water	5	6
Missile Shield	Air	2	5
Stink Bomb	Air	3	4
Air Pocket	Air	3	8
Levitate	Air	5	12
Noxious Fumes	Air	6	10
Asphyxiation	Air	6	12
Armor Shield	Earth	1	2
Direction	Earth	1	3
Knock-Knock	Earth	2	6
Web	Earth	3	7
Armormelt	Earth	4	8
Sleep	Mental	1	3
Detect Secret	Mental	2	5
Wizard Eye	Mental	4	10
Magic Missile	Magic	2	4
Blink	Magic	3	7
Magic Screen	Magic	4	8
Conjuration	Magic	4	10
Anti-Magic	Magic	5	7
Astral Gate	Magic	6	8
Resurrection	Magic	7	20



*Priests' Spellbook*


Spell	Realm	Level	Cost
Lightning	Fire	5	8
Stamina	Water	1	2
Slow	Water	2	4
Haste	Water	3	5
Cure Paralysis	Water	3	6
Paralyze	Water	4	5
Silence	Air	3	4
Cure Poison	Air	4	8
Whirlwind	Air	4	8
Purify Air	Air	5	10
Armorplate	Earth	3	6
Blades	Earth	3	6
Cure Stone	Earth	6	18
Bless	Mental	1	4
Charm	Mental	1	5
Cure Lessor Cnd	Mental	2	4
Divine Trap	Mental	2	4
Identify	Mental	2	8
Hold Monsters	Mental	3	6
Sane Mind	Mental	3	10
Death	Mental	5	10
Locate Object	Mental	6	8
Heal Wounds	Magic	1	4
Make Wounds	Magic	1	3
Dispell Undead	Magic	2	7
Enchanted Blade	Magic	2	4
Conjuration	Magic	4	10
Remove Curse	Magic	5	10
Lifesteal	Magic	6	12
Astral Gate	Magic	6	8
Word of Death	Magic	7	18
Resurrection	Magic	7	20
Death Wish	Magic	7	20


*Psionics' Spellbook*


Spell	Realm	Level	Cost
Stamina	Water	1	2
Terror	Water	1	3
Weaken	Water	2	4
Slow	Water	2	4
Haste	Water	3	5
Cure Paralysis	Water	3	6
Paralyze	Water	4	5
Silence	Air	3	4
Knock-Knock	Earth	2	6
Blades	Earth	3	6
Armormelt	Earth	4	8
Mental Attack	Mental	1	3
Sleep	Mental	1	3
Bless	Mental	1	4
Charm	Mental	1	5
Cure Lessor Cnd	Mental	2	4
Divine Trap	Mental	2	4
Detect Secret	Mental	2	5
Identify	Mental	2	8
Hold Monsters	Mental	3	6
Mindread	Mental	3	8
Sane Mind	Mental	3	10
Psionic Blast	Mental	4	8
Illusion	Mental	4	10
Wizard Eye	Mental	4	10
Death	Mental	5	10
Locate Object	Mental	6	8
Mind Flay	Mental	7	18
Heal Wounds	Magic	1	4
Blink	Magic	3	7
Lifesteal	Magic	6	12
Resurrection	Magic	7	20


Within Wizardry, there are 11 races your character may choose from. Remember, once your character selects a race, it's for good; you can't change it later on.


A character's race, for the most part, influences which profession he or she can enter. Further, most races have their own special resistances and abilities. You'll find information about all the races listed here.


	<b>HUMAN</b>
STR 9 INT 8 PIE 8 VIT 9 DEX 9 SPD 8 PER 8 KAR 0	Humans are the race to which all others in Wizardry are compared. Perfectly balanced in its statistics, having no particular strengths and no decided weaknesses, the human serves as a stable and dependable creature regardless of the profession a Human character eventually enters.
<b>Resistances</b>  Although a Human has no natural resistances, it has no particular shortcomings either.	


	<b>ELF</b>
STR 7 INT 10 PIE 10 VIT 7 DEX 9 SPD 9 PER 8 KAR 0	Elves are smallish creatures, with pointed ears and a broad smile. They excel at intellectual pursuits, loving not only what they learn but the study that comes with it as well. Armed with these smarts, Elves make excellent magic users. Elves are also nimble creatures, moving their small bodies with an above-average ease and speed.
<b>Resistances</b> Elves, because of their high intelligence, have a natural resistance to hypnosis and sleep spells.	

	<b>DWARF</b>
STR 11 INT 6 PIE 10 VIT 12 DEX 7 SPD 7 PER 7 KAR 0	Coming from a long line of forest and cave-dwelling folk, Dwarfs also have a taste for any adventure. They are small beings, but display a remarkable amount of strength. Their hearty stance and high vitality make them a natural for combat-related professions. Also pious individuals, Dwarfs make great Priests.
<b>Resistances</b> The Dwarves' robust body provides poison resistance, while its heredity provides for magic spell protection.	

	<b>GNOME</b>	
	STR 10 INT 7 PIE 13 VIT 10 DEX 8 SPD 6 PER 6 KAR 0	In the underground caves of Wizardry, one might just find whole groups of Gnomes in their natural habitat. Typically keeping to themselves, Gnomes are sturdy, strong and agile creatures; their small stance can easily fool opponents in combat. Gnomes are also extremely pious individuals whose zest for learning (especially spells) is virtually unequalled by any other race.
<b>Resistances</b>  Because of their high piety and ancestry, Gnomes possess a resistance to magic spells.		


	<b>HOBBIT</b>	
	STR 8 INT 7 PIE 6 VIT 9 DEX 10 SPD 7 PER 13 KAR 0	Nearly the smallest of all races found within Wizardry, the Hobbit is a dexterous and busy type able to maneuver its body (and especially its fingers) into and out of the tightest situations. The Hobbit is also well known as a charming conversationalist and for its amazing friendliness and hospitality. Hobbits with lesser inclinations frequently use their silver-tongues and quick fingers to help themselves to goods and information.
<b>Resistances</b>  For reasons unknown, or maybe its go-lucky lifestyle, the Hobbit has resistance to Magic spells.		

	<b>FAERIE</b>	
	STR 5 INT 11 PIE 6 VIT 6 DEX 10 SPD 14 PER 12 KAR 0	The tiniest and most agile race in all of Wizardry, Faeries are delicate and beautiful beings. Their small size and lightning speed give them a naturally low armor class (monsters can't hit what they can't see). The Faerie is also one of the smartest and friendliest creatures in Wizardry. Although not much of a fighter, the Faerie can make an excellent magic user or thief.
<b>Resistances</b>  The Faerie's long relationship with nature gives it a resistance to magic spells.		


	<b>LIZARDMAN</b>	
	STR 12 INT 5 PIE 5 VIT 14 DEX 8 SPD 10 PER 3 KAR 0	The Lizardman is a serpentine-type creature whose origins are somewhat uncertain. Although it is human-like in its ability to talk and walk upright, the Lizardman is not intelligent or personable (actually, others tend to avoid him). Its strengths lie in its natural ability to fight . . . and win. Strong, fast and hearty, with a mind that thinks "kill, kill, kill", the Lizardman has the potential to be the perfect and extremely talented combatant.
<b>Resistances</b>  A lack of intelligence provides resistance to mental spells, while its skin resists to acid.		




15

	<h3 style="text-align: center;">DRACON</h3> <table border="1"> <tr><td>STR</td><td>10</td></tr> <tr><td>INT</td><td>7</td></tr> <tr><td>PIE</td><td>6</td></tr> <tr><td>VIT</td><td>12</td></tr> <tr><td>DEX</td><td>10</td></tr> <tr><td>SPD</td><td>8</td></tr> <tr><td>PER</td><td>6</td></tr> <tr><td>KAR</td><td>0</td></tr> </table> <p>A mixture of blood between the human and the dragon created this wondrous race with incredibly unique abilities. While remaining private, the Dracon occasionally ventures out and will accompany another group for reasons of its own. It is strong, dexterous, and hearty, and can make a great Ranger, Thief, or Fighter. The Dracon also has a limited ability to breathe acid upon its opponents!</p>	STR	10	INT	7	PIE	6	VIT	12	DEX	10	SPD	8	PER	6	KAR	0
STR	10																
INT	7																
PIE	6																
VIT	12																
DEX	10																
SPD	8																
PER	6																
KAR	0																
<p><b>Resistances</b></p> <p>Their own acids give Dracons resistance to acids and their heredity resists mental spells.</p>																	


15

	<h3 style="text-align: center;">FELPURR</h3> <table border="1"> <tr><td>STR</td><td>7</td></tr> <tr><td>INT</td><td>10</td></tr> <tr><td>PIE</td><td>7</td></tr> <tr><td>VIT</td><td>7</td></tr> <tr><td>DEX</td><td>10</td></tr> <tr><td>SPD</td><td>12</td></tr> <tr><td>PER</td><td>10</td></tr> <tr><td>KAR</td><td>0</td></tr> </table> <p>Like their distant relative, the cat, Felpurrs are fast, smart and personable. They walk on their hind feet, and are beautiful creatures with a full mane of hair covering their bodies. Felpurrs are also intelligent and dexterous. Throughout their evolution, they have relied on their sleek body styling and speed more than actual physical strength, and have the ability to move their bodies with a grace unknown to virtually any other race.</p>	STR	7	INT	10	PIE	7	VIT	7	DEX	10	SPD	12	PER	10	KAR	0
STR	7																
INT	10																
PIE	7																
VIT	7																
DEX	10																
SPD	12																
PER	10																
KAR	0																
<p><b>Resistances</b></p> <p>The Felpurr's quick, cat-like reflexes help it to dodge missiles and spells.</p>																	

15


	<h3 style="text-align: center;">RAWULF</h3> <table border="1"> <tr><td>STR</td><td>8</td></tr> <tr><td>INT</td><td>6</td></tr> <tr><td>PIE</td><td>12</td></tr> <tr><td>VIT</td><td>10</td></tr> <tr><td>DEX</td><td>8</td></tr> <tr><td>SPD</td><td>8</td></tr> <tr><td>PER</td><td>10</td></tr> <tr><td>KAR</td><td>0</td></tr> </table> <p>Rawulfs are devoted and hearty creatures. Descending from a race of intelligent, bi-pedal canines, they share their ancestors' caring personality and thick coat as well as an indication of their speed, strength and dexterity. The Rawulf's desire to learn coupled with high piety also help it to become an excellent Priest.</p>	STR	8	INT	6	PIE	12	VIT	10	DEX	8	SPD	8	PER	10	KAR	0
STR	8																
INT	6																
PIE	12																
VIT	10																
DEX	8																
SPD	8																
PER	10																
KAR	0																
<p><b>Resistances</b></p> <p>The Rawulf's thick hair provides it great protection to cold.</p>																	


18


	<h3 style="text-align: center;">MOOK</h3> <table border="1"> <tr><td>STR</td><td>10</td></tr> <tr><td>INT</td><td>10</td></tr> <tr><td>PIE</td><td>6</td></tr> <tr><td>VIT</td><td>10</td></tr> <tr><td>DEX</td><td>7</td></tr> <tr><td>SPD</td><td>7</td></tr> <tr><td>PER</td><td>9</td></tr> <tr><td>KAR</td><td>0</td></tr> </table> <p>Very magical in nature, the Mook's exact origins are entirely unknown. Those skilled in the Wizardry's mythology have gone so far as to speculate the Mook may even be of alien origin! Mooks are extremely intelligent and strong creatures, and have a personality sure to charm the likes of most they encounter.</p>	STR	10	INT	10	PIE	6	VIT	10	DEX	7	SPD	7	PER	9	KAR	0
STR	10																
INT	10																
PIE	6																
VIT	10																
DEX	7																
SPD	7																
PER	9																
KAR	0																
<p><b>Resistances</b></p> <p>The Mook's magical nature gives it resistance to magical spells. Its fur provides resistance to cold.</p>																	

Once you have selected your character's race, he or she enters a profession. There are 14 different professions in Wizardry, each with its own abilities and skills. At the bottom of each profession box, you'll see the profession's initial skill selection. These are the skills you will be able to choose from when you're allocating your character's skill bonus points. Some skills your character may already have - straight out of training. These skills are italicized.

Consider the items your characters can use when creating your party. Fighters, Valkyries and Lords are the only generic fighting professions which enable them to use most weapons and armors including heavy chain and plate mail. Most of the other professions are restricted to medium and light armors and a limited weaponry, or for the Samurai and Ninja, specialized armor and weaponry.

	<h2 style="text-align: center;">FIGHTER</h2>						
	<p><b>STR 12</b></p> <p>The general warrior class is one of the most time-honored professions in fantasy role-playing. Fighters generally have high hit points, and relish their role as shock-troops. They may specialize in a wide array of weaponry skills, and often use these talents to dispose of monsters who stand in the way of adventure. Fighters mainly concentrate on these combat skills, and hone them to a deadly point.</p>						
<p><b>SPELLBOOKS</b></p> <p>None</p>							
<p><b>SKILL SELECTION</b></p> <table border="0"> <tr> <td><b>Weaponry</b></td> <td>Wand &amp; Dagger, Sword, Axe, Mace &amp; Flail, Pole &amp; Staff, Throw, Sling, Bow, Shield</td> </tr> <tr> <td><b>Physical</b></td> <td>Scout</td> </tr> <tr> <td><b>Academia</b></td> <td>Artifacts, Mythology, Scribe</td> </tr> </table>		<b>Weaponry</b>	Wand & Dagger, Sword, Axe, Mace & Flail, Pole & Staff, Throw, Sling, Bow, Shield	<b>Physical</b>	Scout	<b>Academia</b>	Artifacts, Mythology, Scribe
<b>Weaponry</b>	Wand & Dagger, Sword, Axe, Mace & Flail, Pole & Staff, Throw, Sling, Bow, Shield						
<b>Physical</b>	Scout						
<b>Academia</b>	Artifacts, Mythology, Scribe						

	<h2 style="text-align: center;">MAGE</h2>						
	<p><b>INT 12</b></p> <p>The creators of the powerful Mage spells continue, to this day, to devote a life's work to their study. Because they practice only Mage spells, Mages learn them quicker than any other profession in Wizardry. Mages have poor hit points and are very limited in the number of armor and weapons they can use. However, their dedicated spellcasting abilities make them ideal magic users for any party.</p>						
<p><b>SPELLBOOKS</b></p> <p>Mage</p>							
<p><b>SKILL SELECTION</b></p> <table border="0"> <tr> <td><b>Weaponry</b></td> <td>Wand &amp; Dagger, Pole &amp; Staff, Throw, Sling, Bow</td> </tr> <tr> <td><b>Physical</b></td> <td>Scout, Oratory</td> </tr> <tr> <td><b>Academia</b></td> <td>Artifacts, Mythology, Scribe, <i>Thaumaturgy</i></td> </tr> </table>		<b>Weaponry</b>	Wand & Dagger, Pole & Staff, Throw, Sling, Bow	<b>Physical</b>	Scout, Oratory	<b>Academia</b>	Artifacts, Mythology, Scribe, <i>Thaumaturgy</i>
<b>Weaponry</b>	Wand & Dagger, Pole & Staff, Throw, Sling, Bow						
<b>Physical</b>	Scout, Oratory						
<b>Academia</b>	Artifacts, Mythology, Scribe, <i>Thaumaturgy</i>						

	<h2 style="text-align: center;">PRIEST</h2>						
	<p><b>PIE 12</b></p> <p><b>PER 8</b></p> <p>Long known for their healing powers, Priests are useful to any party hoping to live for more than a day in the dungeon. A dedicated individual, Priests give all of their attention to the study of the divine Priest spells. Their devotion allows them to learn these spells quicker than any other profession within Wizardry. Priests also have fairly high hit points, and must use specially consecrated weapons; they can wear light armor.</p>						
<p><b>SPELLBOOKS</b></p> <p>Priest</p>							
<p><b>SKILL SELECTION</b></p> <table border="0"> <tr> <td><b>Weaponry</b></td> <td>Mace &amp; Flail, Pole &amp; Staff, Sling, Shield</td> </tr> <tr> <td><b>Physical</b></td> <td>Scout, Oratory</td> </tr> <tr> <td><b>Academia</b></td> <td>Artifacts, Mythology, Scribe, <i>Theology</i></td> </tr> </table>		<b>Weaponry</b>	Mace & Flail, Pole & Staff, Sling, Shield	<b>Physical</b>	Scout, Oratory	<b>Academia</b>	Artifacts, Mythology, Scribe, <i>Theology</i>
<b>Weaponry</b>	Mace & Flail, Pole & Staff, Sling, Shield						
<b>Physical</b>	Scout, Oratory						
<b>Academia</b>	Artifacts, Mythology, Scribe, <i>Theology</i>						



**THIEF**

DEX 12  
SPD 8

For those who just couldn't resist a good temptation, thieving might just be the perfect career. Thieves are very good at circumventing the noxious treasure chest traps which often lie between a party and their hard-earned loot. They also have the skill to pick locked doors, and delight in opportunities to pickpocket. Thieves can hide in combat, and if successfully hidden, they can launch a surprise attack . . . doing double damage.

**SPELLBOOKS**

None

**SKILL SELECTION**

**Weaponry** Wand & Dagger, Sword, Axe, Mace & Flail, Pole & Staff, Throw, Sling, Bow, Shield  
**Physical** Scout, Oratory, Legerdemain, *Skulduggery*, Ninjutsu  
**Academia** Artifacts, Mythology, Scribe

**RANGER**

STR 10  
INT 8  
PIE 8  
VIT 11  
DEX 10  
SPD 8  
PER 8

The nature-lover of Wizardry, the Ranger enjoys a talent for scouting out such things as secret passages, trick walls and other traps of this nature. Much like Robin Hood, a classic of this profession, Rangers are excellent archers. Around the third level of experience, Rangers slowly begin to learn Alchemists' spells. They have fairly high hit points.

**SPELLBOOKS**

Alchemist

**SKILL SELECTION**

**Weaponry** Wand & Dagger, Sword, Axe, Mace & Flail, Pole & Staff, Throw, Sling, Bow, Shield  
**Physical** *Scout*  
**Academia** Artifacts, Mythology, Scribe, Alchemy

**ALCHEMIST**

INT 13

DEX 13

The weavers of magical spells, Alchemists aspire to bend the laws of the universe. Although they are spellcasters, their tradition shows them to be the mixers of the potions, and the diviners of spells. Using their high intelligence, Alchemists concentrate their studies fully to this art allowing them to learn its spells faster than any other profession in Wizardry. Additionally, due to the nature of their spells, they need no oratory and cannot be silenced.

**SPELLBOOKS**

Alchemist

**SKILL SELECTION**

**Weaponry** Wand & Dagger, Mace & Flail, Pole & Staff, Throw  
**Physical** Scout  
**Academia** Artifacts, Mythology, Scribe, *Alchemy*

**BARD**

INT 10

DEX 12

SPD 8

PER 12

The silver-tongued adventurer, the Bard enjoys a talent for song, entertainment and conversation. Additionally, their musical talents allow them to play the different instruments found within Wizardry, casting a spell with each. Bards also begin to study powerful Mage spells around the third level of experience. While not as studied as the Thief, Bards have been known to pick a pocket or two as well.

**SPELLBOOKS**

Mage

**SKILL SELECTION**

**Weaponry** Wand & Dagger, Sword, Axe, Mace & Flail, Pole & Staff, Throw, Sling, Bow, Shield  
**Physical** Scout, *Music*, Oratory, Legerdemain, *Skulduggery*  
**Academia** Artifacts, Mythology, Scribe, *Thaumaturgy*



**PSIONIC**

STR 10  
INT 14  
  
VIT 14  
  
PER 10

Concentrating on the wonders of the mind, the Psionic is a magic user who has developed mental powers to a level no other profession can hope to possess. Their spells have the ability to alter the mind, read it and mess with it in general. They are both clairvoyants and diviners, who focus all of their energies on their mental and magical abilities. Through this devotion, Psionics learn the mental spells faster than any other profession.

**SPELLBOOKS**

Psionic

**SKILL SELECTION**

**Weaponry** Wand & Dagger, Mace & Flail, Pole & Staff, Throw, Sling  
**Physical** Scout, Oratory  
**Academia** Artifacts, Mythology, Scribe, *Theosophy*

**VALKYRIE**

STR 10  
  
PIE 11  
VIT 11  
DEX 10  
SPD 11  
PER 8

A profession open only to female characters, the Valkyrie is a first-rate lance warrior. Her knowledge of weapons is vast and precise; her spirit for combat is great. She is strong, and has the ability to swing her sword with a speed and accuracy admired by all. Around the third level of ability, the pious Valkyrie begins the study of Priest spells. However, she doesn't learn them as quickly as the Priest.

Female

**SPELLBOOKS**

Priest

**SKILL SELECTION**

**Weaponry** Wand & Dagger, *Sword*, Axe, Mace & Flail, Pole & Staff, Throw, Sling, Bow, Shield  
**Physical** Scout, Oratory  
**Academia** Artifacts, Mythology, Scribe, Theology

**BISHOP**

INT 15  
PIE 15  
  
PER 8

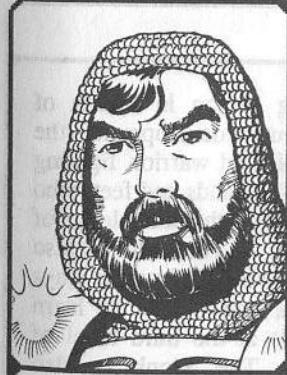
Extremely intelligent and pious individuals, Bishops devote a major portion of their time to the ancient studies. Pooling the knowledge of the Mage and Priest, Bishops are well-studied characters who learn the spells of both their counterparts. However, because of the time required to study both spellbooks, Bishops learn spells more slowly than the Mage or Priest.

**SPELLBOOKS**

Priest, Mage

**SKILL SELECTION**

**Weaponry** Mace & Flail, Pole & Staff, Sling, Shield  
**Physical** Scout, Oratory  
**Academia** Artifacts, Mythology, Scribe, *Theology*, *Thaumaturgy*

**LORD**

STR 12  
INT 9  
PIE 12  
VIT 12  
DEX 9  
SPD 9  
PER 14

Both an excellent fighter and a pious spellcaster, Lords are the true crusader knights of Wizardry. While their combat skills are their primary concern, the Lord's crusader interest in the divine Priest spells begins to develop around the third level of experience, and helps to provide the party with the additional healing power it may need. Whether it be inflicting the damage or healing it, Lords are a great addition to any party.

**SPELLBOOKS**

Priest

**SKILL SELECTION**

**Weaponry** Wand & Dagger, *Sword*, Axe, Mace & Flail, Pole & Staff, Throw, Sling, Bow, Shield  
**Physical** Scout, Oratory  
**Academia** Artifacts, Mythology, Scribe, Theology

**SAMURAI**

STR 12  
INT 11  
VIT 9  
DEX 12  
SPD 14  
PER 8

The true swordsman of Wizardry, the Samurai has dedicated his or her life to the study of the sword. Their lightning speed combined with their sword's accuracy help them to fight their way through most any situation. Samurai can learn the deadly skill of the critical kill, unleashing it upon their opponents in the heat of battle. Their magical abilities, learning Mage spells, develop around the third level of experience.

**SPELLBOOKS**

Mage

**SKILL SELECTION**

**Weaponry** Wand & Dagger, Sword, Axe, Mace & Flail, Pole & Staff, Throw, Sling, Bow, Shield  
**Physical** Scout, Oratory  
**Academia** Artifacts, Mythology, Scribe, Thaumaturgy, Kirijutsu

**MONK**

STR 13  
INT 8  
PIE 13  
DEX 10  
SPD 13  
PER 8

A wandering person in search of inner and outer development, the Monk is a talented warrior, fighting mostly with the hands and feet, who tops this ability with a knowledge of self defense. The Monk also possesses keen insight into the ways of the mind, and begins to learn Psionic spells at the third level of experience. The Monk is also studied in the body, and is capable of scoring a critical hit on an opponent.

**SPELLBOOKS**

Psionic

**SKILL SELECTION**

**Weaponry** Wand & Dagger, Mace & Flail, Pole & Staff, Throw, Sling, Bow, Shield, *Hand & Feet*  
**Physical** Scout, Oratory  
**Academia** Artifacts, Mythology, Scribe, *Theosophy*, Kirijutsu

**NINJA**

STR 12  
INT 10  
PIE 10  
VIT 12  
DEX 12  
SPD 12

The ultimate assassin, the Ninja is a devout killer with skills and talents admired by all. They commonly fight with their hands and feet, wreaking havoc upon their unlucky opponents. Ninja may also deliver a critical blow to whatever stands in their way. Sharing some of the Thief's skills, the Ninja is able to hide in combat, in hopes of launching a deadly surprise attack. Much later in their careers, Ninja begin to learn Alchemist spells.

**SPELLBOOKS**

Alchemist

**SKILL SELECTION**

**Weaponry** Wand & Dagger, Sword, Axe, Mace & Flail, Pole & Staff, Throw, Sling, Bow, Shield, *Hand & Feet*  
**Physical** Scout, Legerdemain, Skulduggery, *Ninjutsu*  
**Academia** Artifacts, Mythology, Scribe, Alchemy, Kirijutsu

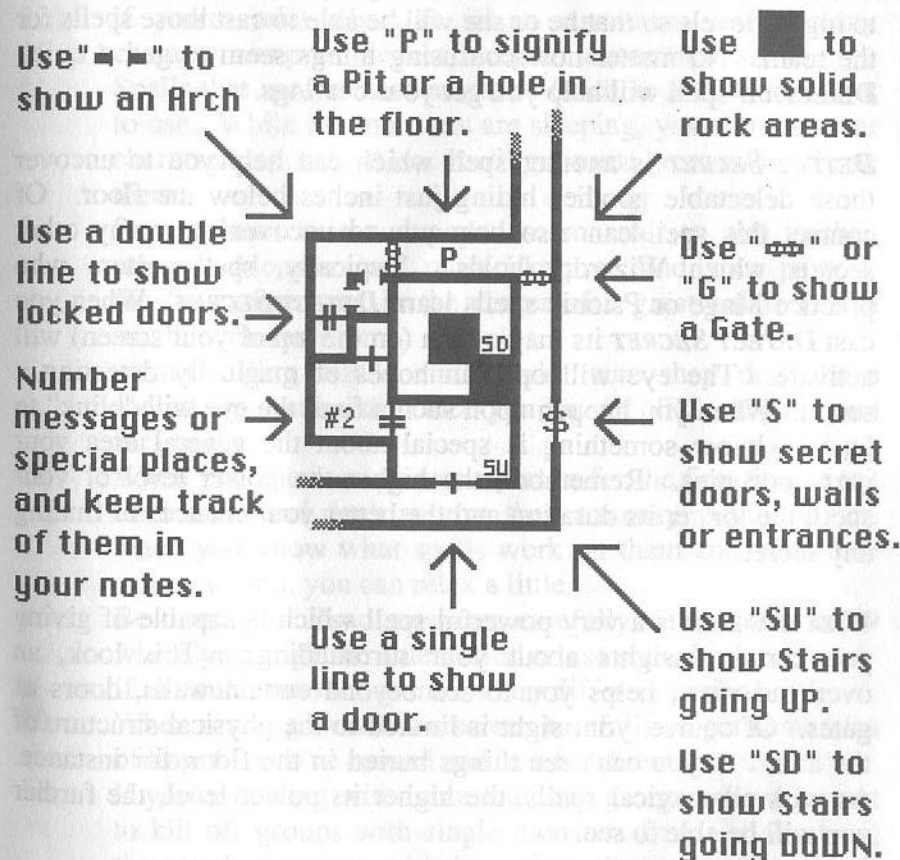


Mapping can be an important, enjoyable and interesting pastime. Although it's not *absolutely* necessary to make maps, you may find it easier to get back to particular areas or revisit an old NPC friend if you've got a map to show you the way. Sometimes, your maps will allow you to see "missed" areas or places off the beaten path which may hold extra goodies. Of course, if you get lost, it will be easier to figure out your location.

Mapping is not all that difficult, but it does take a little patience. Use graph paper to chart your progress. However, be wary of nasty tricks designed to mislead you.

The fundamental way to map is to stand on a square, look north, map what you see; then turn east (don't move off that square!), and map what you see. Do the same for the south and west directions also. Then and only then, take a step in one of the four directions and repeat the mapping procedure. If you see a door, a dark area or stairs, be careful when going through, up or down them. You may not be able to get back! When entering such areas, check to see if you can return to your previous location.

Below you'll see an example of mapping technique. The most common features of Wizardry are pointed out. Of course, there are dozens of other surprises in store for you. You can make up your own symbols to note special features like these on your maps.





### Mapping Aids

There are several things that will aid you in your travels. First, and foremost, is the use of *DIRECTION* spell. On your screen, you'll see a compass; the direction you're facing will be the color red. Cultivate a character who can cast Mage spells, and aid him or her to higher levels so that he or she will be able to cast those spells for the team. No matter how confusing things seem to get, a quick *DIRECTION* spell will help you get your bearings.

*DETECT SECRET* is another spell which can help you to uncover those delectable goodies hiding just inches below the floor. Of course, this spell can also help you to uncover the many other secrets which Wizardry holds. Typically, spell casters who practice Mage or Psionic spells learn *DETECT SECRET*. When you cast *DETECT SECRET* its magic icon (on the top of your screen) will activate. The eye will open in hopes of magically detecting a secret. When you happen upon such a find, the eye will "blink" to let you know something is special about the general area your party occupies. Remember, the higher the power level of your spell, the longer its duration and the better your chances of finding any secret.

*WIZARD'S EYE* is a very powerful spell which is capable of giving you certain insights about your surroundings. This look, an overhead view, helps you to see beyond certain walls, doors or gates. Of course, your sight is limited to the physical structure of the area . . . you can't see things buried in the floor, for instance. As with all magical spells, the higher its power level, the further you will be able to see.

1. Good notes are important as extra insurance. You can refer to them to see if you've missed something or to recall certain information you might need.
2. Add skill bonus points to your spell caster's specific Academia skill so he or she will continue to learn new spells.
3. If you're relatively safe in an encounter, let as many characters as possible rest to regain some stamina.
4. Spells that incapacitate monsters (such as *SLEEP*) are great to use. While the monsters are sleeping, you can rest your characters up, too. Also, you'll get some great swings in on them.
5. Some places in the dungeon seem safer to rest in than others. Monsters are more likely to find your party if they're camped out in the center of a great hall versus a small, enclosed room.
6. Avoid killing NPCs until you're sure they don't have something you need. Once you kill an NPC, they're gone for good.
7. When you encounter a new monster for the first time, don't hold back, and don't assume they are easy to kill. Later, when you know what spells work on them and what they can do to you, you can relax a little.
8. Be thorough. Read messages carefully. You never know where you might be able to find or use something.
9. If in doubt, save the game and try different options.
10. When running, watch the screen carefully to get some idea of how far you've moved and in what direction.
11. If you're dealing with more than one group, you may want to kill off groups with single monsters first. In this way, the tough monsters with lots of spells can't retreat to the rear and out of your fighters' range. Sometimes, however, the reverse may be desirable.

Academia Skills	20
Add Party Member	5
Adventuring, stages of	34
Afraid	63
Age	22
Air Spells	82-85
Alchemist	113
Alchemist, Spellbook	100
Alchemy	20, 70
Armor Class (AC)	25
Armor Class, Magical	26
Armor Classes, Body	26
Armorplate	37
Artifacts	20
Asleep	63
Assay	28
Axe	18
Backup (option in combat)	62
Bard	113
Bash (fighting mode)	55
Bishop	115
Blindness	64
Block, Parry	58
Bonus Skill Points	21
Books, Reading (Use)	30
Bow	18
Breathe (attacks in combat)	62
Buy (items from NPC)	70, 71
Cancel (in combat)	62
Carrying Capacity	24, 67
Casting a Spell, How to	77
Change Name	31
Change Profession	31

Character Menu	7
Character, Profession	16, 110
Distributing Bonus Points	16
Character, Selecting Sex	15
Character, Creating a	8
Character, Naming a	12
Characters, Race	13, 104
Characters, Screen Icon	38
Combat	53
Combat Notes and Modifiers	63
Condition (CDN)	23
Conditions	63
Cost, spell	75
Damage (in combat)	54
Dead	64
Delay, Message	45
Delete PC	33
Detect Secret	37, 40
Detect Secret, spell (mapping)	120
Dexterity (DEX)	11
Direction (spell)	37, 120
Disarm (treasure chests)	50
Disk	44
Dismiss Member	6
Divving Loot	52
Dodge, Parry	58
Dracon	62, 108
Drop (an item)	29
Dwarf	105
Earth Spells	86-88
Edit	31

Elf	105
Enchanted Blade	37
Encumbrance (in combat)	66, 67
Encumbrance Penalty	26
Equip	21, 27
Equip (in combat)	59
Experience Levels, Gaining	68
Experience Points (EXP)	23
Expert Mode	45
Extended range weapons (E)	56
Faerie	107
Felpurr	108
Fight (in combat)	54
Fight (NPC)	73
Fighter	110
Fighting Mode (in combat)	54
Fighting Modes Chart	55
Fire Spells	78, 79
Force (a door)	47
Formatting a Save Game Diskette	3
Gaining Experience Levels	68
Game Configuration	45
Give (to NPC)	71
GMode	45
Gnome	106
Gold Pieces (GP)	23
Gold, Pooling	72
Guard, Parry	58
Hand & Feet	18, 55
Hide (in combat)	61
Hints	121
Hit Points	15
Hobbit	106
Human	104
Input Device	45

Insanity	64
Inspect (treasure chests)	49
Intelligence (INT)	10
Irritation	64
Karma (KAR)	11
Karma, Rolling	17
Kick (fighting mode)	55
Kirijutsu	20, 55
Knock-Knock	48, 51
Lashing (fighting mode)	55
Legerdemain	19
Level (LVL)	22
Level of Play	45
Levels, Spell	74
Levitation	37
Life Insurance	67
Lizardman	107
Locked Doors	47
Long Range (L) weapons	56
Lord	115
Mace & Flail	18
Mage	111
Mage, Spellbook	101
Magic Screen	37
Magic Spells	95-99
Magical Modifiers	65
Magical Spells	74
Magical Spells, Choosing	21
Magical Windows	37
Maladies	63
Mapping	118
Master Options Menu	5
Master Options Window	36
Melee (fighting mode)	55
Mental Spells	89-94



Merge	29
Modifiers, Magical	65
Monk	116
Monster Kill Statistics (MKS)	23
Mook	109
Mouse, Using a	45
Move (in combat)	60
Movement, Move	39
Movement, Turn	39
Multiple Attacks	57
Multiple Expeditions	7
Multiple Hits	57
Music	19
Mythology	20
Natural AC	25, 67
Nausea	64
Ninja	117
Ninjutsu	19, 55
Ninjutsu, hide in combat	61
Non-Player Characters	69
Normal Play Mode	45
Novice Play Mode	45
Open	41
Open (locked doors)	47
Open (treasure chests)	51
Oratory	19, 76
Order (adjusting)	35, 42
Paralyzed	64
Parry	58
Party	9
Party Options	40
Party, order of	35
Personality (PER)	11
Physical Skills	19
Pick (a lock)	48

Piety (PIE)	10
Play Diskettes	3
Poison	43, 65
Pole and Staff	18
Pool Gold	72
Portrait	17, 31
Power Levels, spells	75
Priest	111
Priest, Spellbook	102
Primary Weapon	27
Professions, Character	110
Psionic	114
Psionic, Spellbook	103
Punch (fighting mode)	55
Quit	7
Quit Game - No Save	44
Race, Character	104
Race, Selecting	13
Race/Profession Chart	14
Ranged weapons	56
Ranger	112
Rank (RNK)	22
Rawulf	109
Reading Books	30
Realms, Magical spells	74
Rebirths	22
Rename PC	33
Replace (a character)	32
Rest	43
Rest, Parry (in combat)	58
Resume Save Game	7, 35
Review (a character)	6, 32, 41
Run (in combat)	62
Samurai	116
Save Game & Quit	44

Save Game & Resume	44
Save Game Drive	46
Scenario Drive	46
Scout	19
Screen, Magical Windows	36
Screen, Master Options Window	36
Scribe	20
Search	40
Secondary Weapon	27
Sell (items to NPC)	71
Shield (skill)	18
Shield Bonus	26
Shoot (fighting mode)	55
Short range weapons (S)	56
Show Title Page	7
Skill Points, Distributing	21
Skills, Academia	20
Skills, Physical	19
Skills, Reviewing	32
Skills, Selecting	17
Skills, Weaponry	18
Skulduggery	19, 49
Sling	18
Sound	45
Speed (SPD)	11
Spell	29, 41
Spell (casting on NPC)	72
Spell (treasure chests)	51
Spell Cost	75
Spell Levels	74
Spell, casting a (in combat)	59
Spellbooks	74
Stamina	15
Start New Game	5, 6, 35
Statistical Bonuses	66

Statistics	10
Statistics, Additional	22
Steal (from NPC)	73
Stoned	65
Strength (STR)	10
Summoning Spells	76
Surprise Attacks	67
Swag	30
Swag, removing item from in combat	59
Sword	18
Talk (to NPC)	69
Thaumaturgy	20, 77
Theology	20, 77
Theosophy	20, 77
Thief	112
Throw	18
Throw (fighting mode)	55
Thrown Weapons (T)	56
Thrust (fighting mode)	55
To Hit (in combat)	54, 67
To Penetrate (in combat)	54
Trade (with NPC)	70
Trade, Between Players	31
Treasure Chests	49
Turn	39
Use	30, 41
Use (item in combat)	60
Use (item on NPC)	72
User Interface	4
Valkyrie	114
Vitality (VIT)	11
Wand & Dagger	18
Water Spells	80, 81
Weaponry Skills	18
Wizard's Eye, spell (mapping)	120

## Disk Warranty

If your disk(s) should become unreadable within 30 days of purchase, return it with a dated proof of purchase to SIR-TECH SOFTWARE, INC., for a free replacement. After 30 days enclose \$8.00 (price subject to change without notice) to cover costs of media restoration or replacement and shipping charges. Before returning your disk(s), please determine if your computer is malfunctioning. Test the disk(s) on another computer. If the program works, you have a problem with your hardware. If the program doesn't operate, send the disk(s) back to us. The original disk(s) must be returned to us for replacement.

### Mailing Address

Sir-tech Software, Inc., P.O. Box 245  
Ogdensburg, New York 13669

### Courier Address

Sir-tech Software, Inc., Ogdensburg Business Center, Suite 2E  
Ogdensburg, New York 13669

## For the Best Service

Please return your warranty registration card. Doing so will guarantee you the fastest possible repair or replacement of a damaged diskette. It also entitles you to be notified of new Sir-tech products as they are released.

## Disclaimer

Neither SIR-TECH SOFTWARE, INC., the author(s), distributor(s) or seller(s) of this product shall have any liability or responsibility to the purchaser or any other person or entity with respect to any liability, loss or damage caused or alleged to be caused directly or indirectly by this product, including but not limited to any interruption of service, loss of business and anticipatory profits or consequential damages resulting from the use or operation of this product. This product will be exchanged if defective in the manufacture, labeling or packaging, but except for such replacement the sale or subsequent use of this program material is without warranty or liability.

**NOTE:** This product is copyrighted and all rights are reserved. The distribution and sale of this product are intended for the personal use of the original purchaser only, and for use only on the computer system(s) specified herein. Renting this product, or duplicating and selling or renting or otherwise distributing this product, in any form, is hereby expressly prohibited.



Printed in Canada

**SIR-TECH**

P.O. Box 245 Ogdensburg, New York 13669  
(315) 393-6633

Part #: RC30107200